



MPIDC

MP INDUSTRIAL DEVELOPMENT
CORPORATION LTD.



**INVEST
MADHYA
PRADESH**

ADVANTAGE MADHYA PRADESH

Strategic Location

- ▶ State's strategic location ensures access to ~50% of India's Population within 4 hours
- ▶ 2nd Largest State by Area
- ▶ 5th Largest State by Population

- North-South Corridor
- East-West Corridor
- Delhi Mumbai Greenfield Expressway
- Agra Bombay Road
- DMIC Influence Region
- Major Railway Lines



Network of Corridors

▶ **Delhi - Mumbai Industrial Corridor (DMIC)**

MP hosts a key industrial node Vikram Udyogpuri (VUL) at Ujjain

▶ **North-South Corridor**

The main trunk line of India

▶ **East-West Corridor**

Passes through the Gwalior Region, considered as MP's gateway to North India

▶ **Delhi-Mumbai Greenfield Expressway (DMGE)**

A total of 7 exits in the state enhancing connectivity and boosting overall industrial ecosystem. Ratlam is the centre point of DMGE

Upcoming Industrial Corridors:

- ▶ Delhi-Nagpur Industrial Corridor
- ▶ Atal Progressway Industrial Corridor
- ▶ Narmada Expressway Industrial Corridor
- ▶ Indore - Pithampur Economic Corridor



Industry Friendly Infrastructure

► Industrial Land Bank

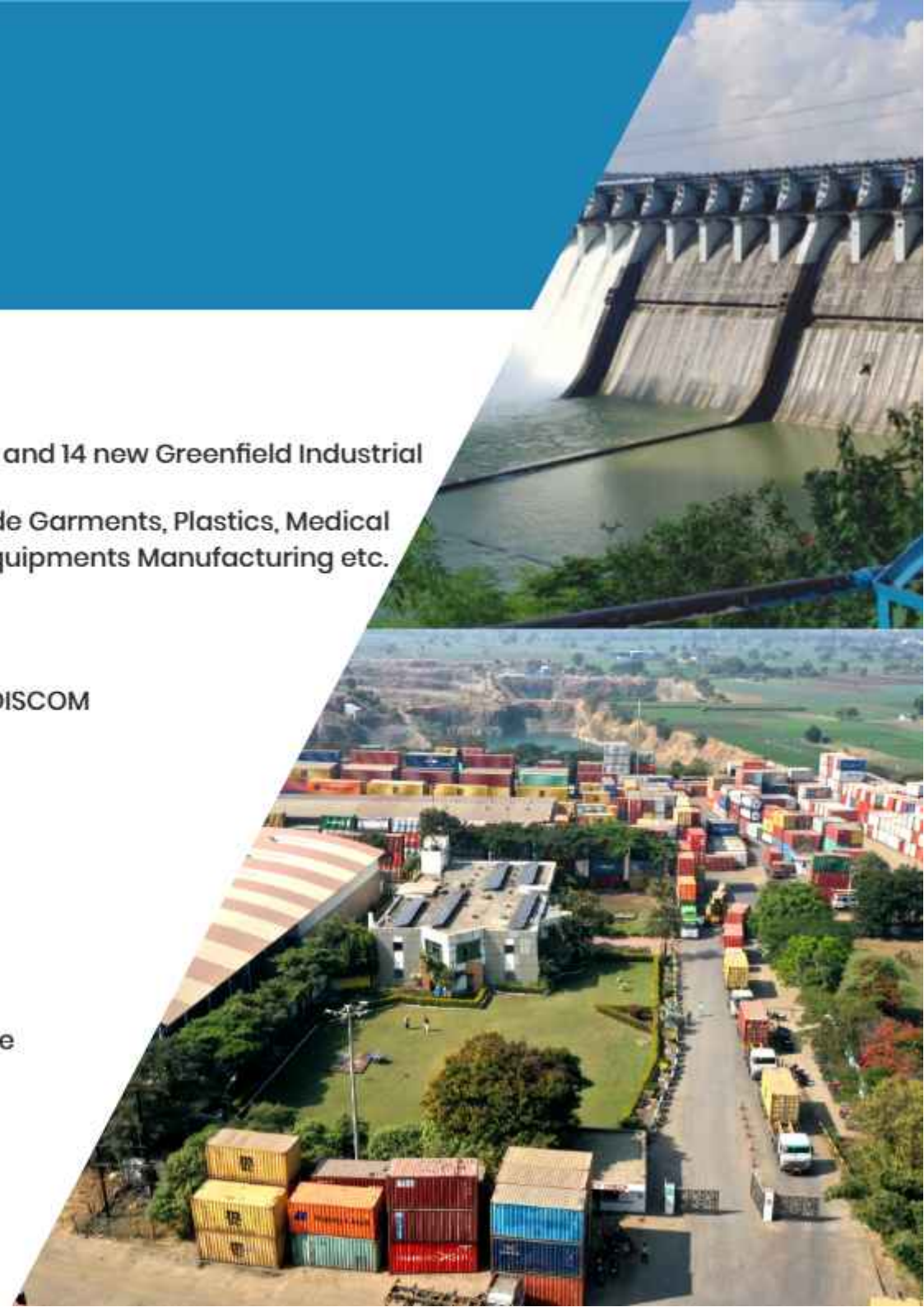
- ✔ A land bank of more than 1.25 lakh acres
- ✔ Presence of 112 developed / developing Industrial Areas and 14 new Greenfield Industrial areas
- ✔ Dedicated Industrial Clusters for Electronics, Readymade Garments, Plastics, Medical Devices, Textile, Confectionery, Toys, Furniture, Power Equipments Manufacturing etc.

► Availability of Resources

- ✔ More than 1,000 MCM Water available for Industrial use
- ✔ 24x7 stable Power supply at Competitive Power Tariff; DISCOM licence with MPIDC in some Industrial Areas
- ✔ Green Power available

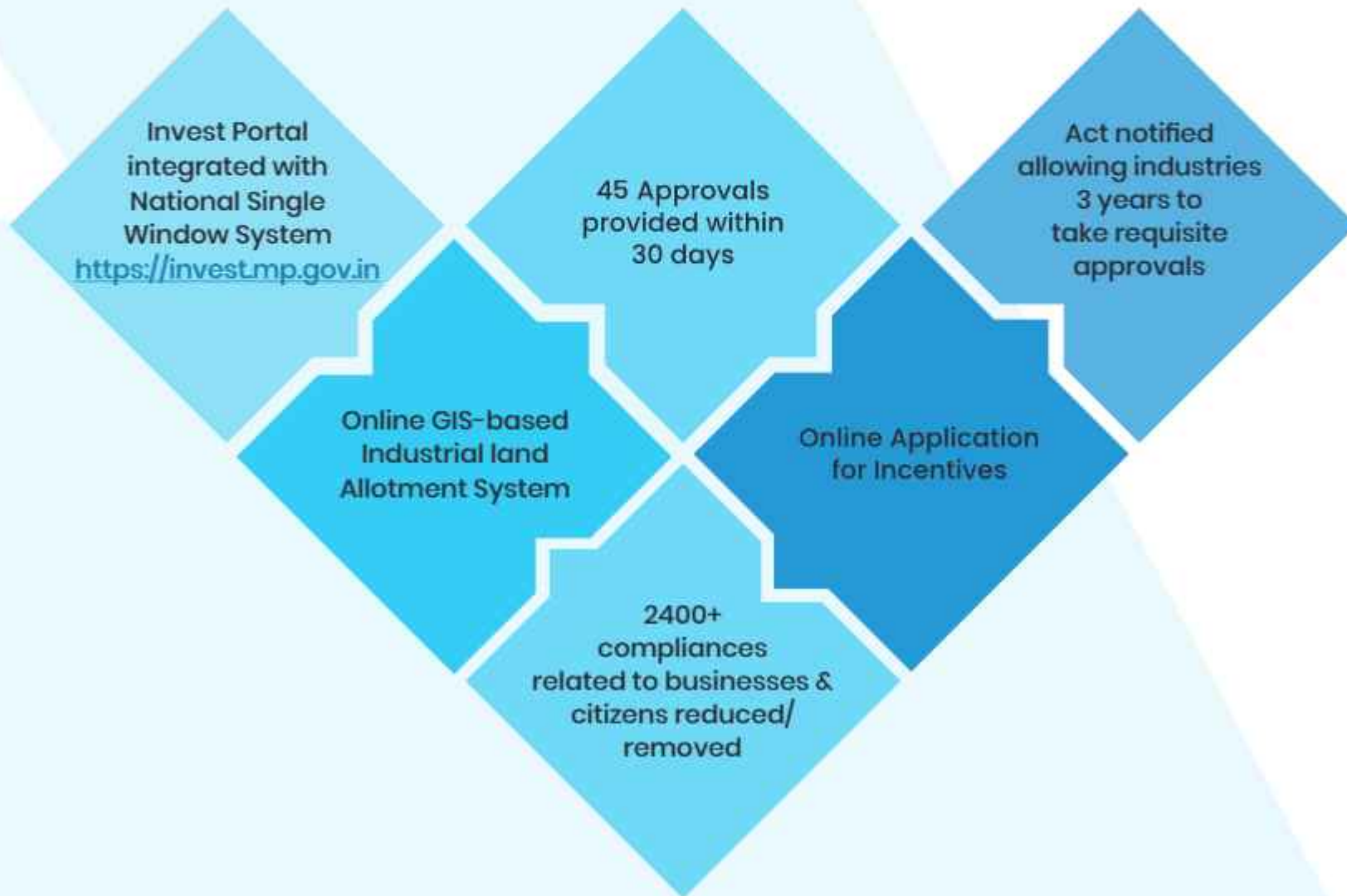
► Connectivity

- ✔ 5 Commercial Airports and 26 Airstrips
- ✔ Extensive Road Network of more than 3 lakh KMs
- ✔ North-South, East-West Rail Connectivity
- ✔ "Greenfield International Airport" coming up near Indore
- ✔ 6 ICDs strategically located at Malanpur (Gwalior), Mandideep (Bhopal), Pawarkheda (Itarsi), Kheda, Tihi, Dhannad (Indore) and PFTs at Ratlam and Tihi



Globally Competitive 'Ease of Doing Business Environment'

'Start Your Business in 30 Days'



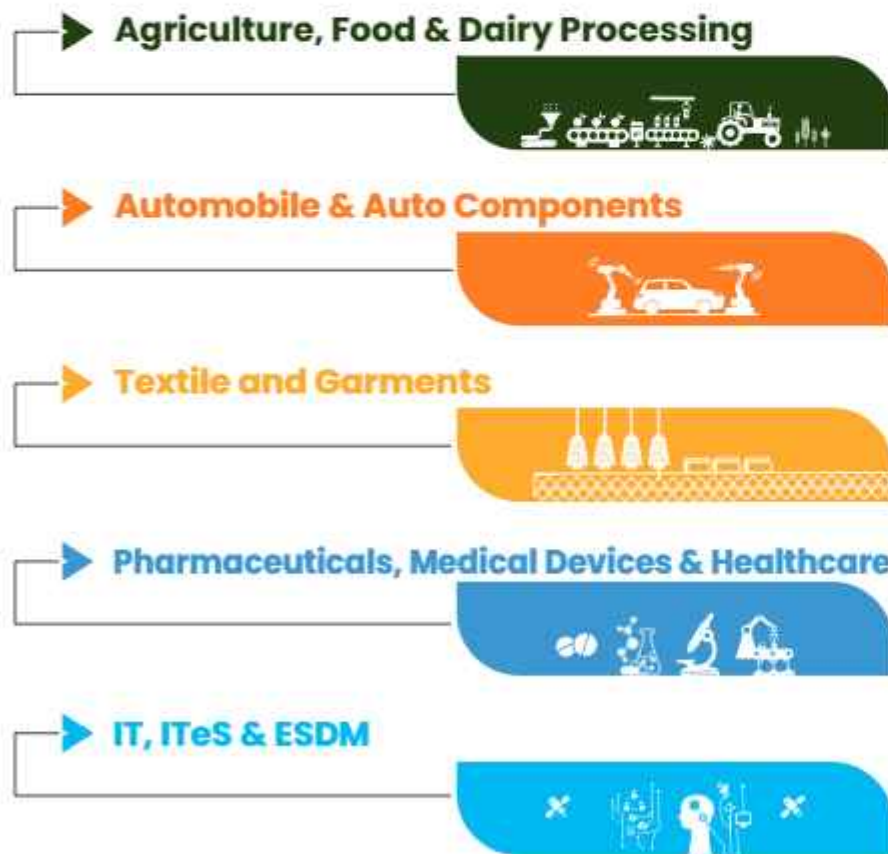
Labour Reforms to Facilitate Investment

- ▶ 61 registers reduced to a Single Register
- ▶ Women permitted to work in all 3 shifts (24x7)
- ▶ Overtime hours increased from 75 to 125 hrs per quarter
- ▶ Contract Worker's License for entire employment period (no yearly renewals required)
- ▶ Provision of Deemed Approvals for 16 services
- ▶ Decriminalization of Minor Offences



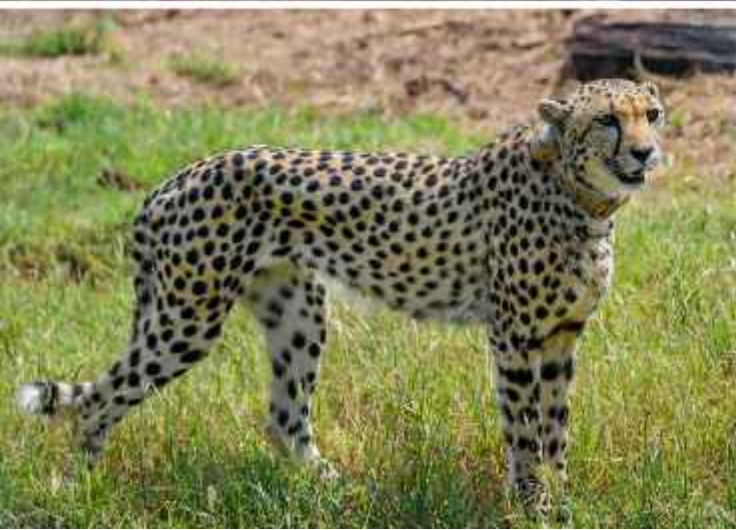
Focus Sectors

To make Madhya Pradesh a US\$ 550 Billion economy





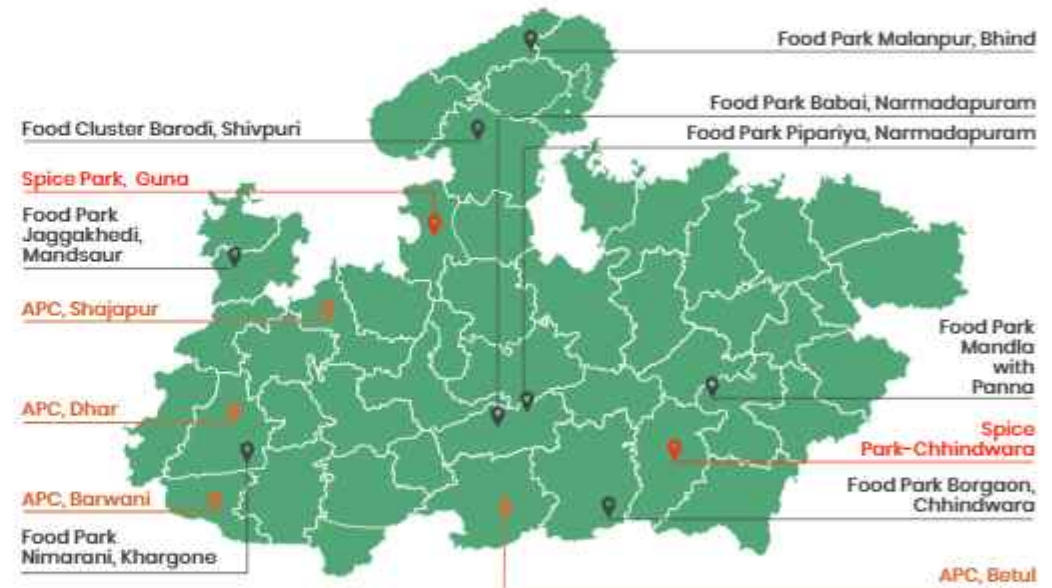
Sectoral Strength of Madhya Pradesh



Agriculture, Dairy and Food Processing

- ▶ State with 11 Agro Climatic Zones ensuring varied agri produce
- ▶ Largest producer of Pulses and Spices
- ▶ Second largest producer of Foodgrains and Flowers
- ▶ Leading producer of Oilseeds, Vegetables, Medicinal Plants and Milk
- ▶ Leader in Organic crop production
- ▶ 2 Government Agriculture Universities, 1 Government Veterinary University, 3 ICAR Institutes and 2 Research Centres
- ▶ Winner of Krishi Karman Award, 7 times in a row
- ▶ Holds 3rd rank in Milk Production across India.
- ▶ 8th Largest Domestic Dairy Market in the Country, contributing 8.73% to the overall National Production.
- ▶ CAGR of Dairy Production in MP is 8.60%, surpassing the National Average of 5.70%.

Excellent Infrastructure for Food Processing Sector



3 National Research Centres



▶ State has 70+ large units & 3800+ MSMEs Operating in Food Processing sector in the State

▶ Attractive Food Processing Policy ; upto 60% Investment Promotion Assistance

▶ Unique Varieties suitable for Food Processing

- ▶ Wheat
 - ▶ Durum Wheat suitable for Semolina and Pasta
 - ▶ Sharbati suitable for Bread and Chapati
- ▶ Scented Rice- Basmati, Chinnaur, Jeerashankar
- ▶ Spices- Coriander, Ginger, Turmeric, Fenugreek, Chilli

▶ One District One Product

- ▶ 24 food products have been identified to enhance value addition in the state
- ▶ 4 GI Tag food products – Oranges, Chinnaur Rice, Kadaknath(Chicken) and Ratlami Sev



Automobile and Auto Components

Indore, Bhopal, Pithampur and Dewas are India's leading Auto Clusters

10+ OEMs

200+ Auto Component manufacturers

2800+ Engineering manufacturers

Institutional Support in the State



Central Board of Secondary Education
Training & Testing Institute
Bhopal



Indo-German Tool
Room, Indore



MUMI Technology
Centre, Bhopal



ATTC, Indore



Global Skills Park,
Bhopal



▶ **NATRAX: National Automotive Test Tracks**

- ▶ Asia's longest High-speed test track, measuring 11.3 km in length
- ▶ 14 test tracks
- ▶ 5 Auto specific labs
- ▶ Tests available for Vehicle Dynamics
- ▶ Test Facility for all categories of vehicles

▶ **Leading State in manufacturing of Commercial Vehicles and Farm Equipments**

▶ **Focus on Next Gen Mobility with players setting up their EV facilities**

CASE
CONSTRUCTION

BRIDGESTONE

JETTYRE
SALES SERVICE

JOHN DEERE

FORCE
MOTORS

RALSON
TYRES (INDIA) PRIVATE LIMITED

MAHINDRA
TWO WHEELERS

JAI
INDIA

CAPARO

VE COMMERCIAL VEHICLES
A VOLVO GROUP AND HICHER MOTORS JOINT VENTURE



Textile and Garment

- ▶ MP has ample raw material - Cotton, Silk and manmade Fibre
- ▶ MP accounts for 47% of India's and 24% of the world's Organic Cotton production
- ▶ 60+ large textile mills, thousands of Looms & millions of Spindles operating in MP
- ▶ Readymade garment cluster at Indore houses over 120 units
- ▶ Presence of Textile and Design Institutes ensuring availability of Skilled Manpower



राष्ट्रीय डिजाइन संस्थान
NATIONAL INSTITUTE OF DESIGN
NID, Bhopal



BITDM
Jabalpur



एन.एफ.टी. संस्थान
NATIONAL INSTITUTE OF FASHION TECHNOLOGY
NIFT, Bhopal

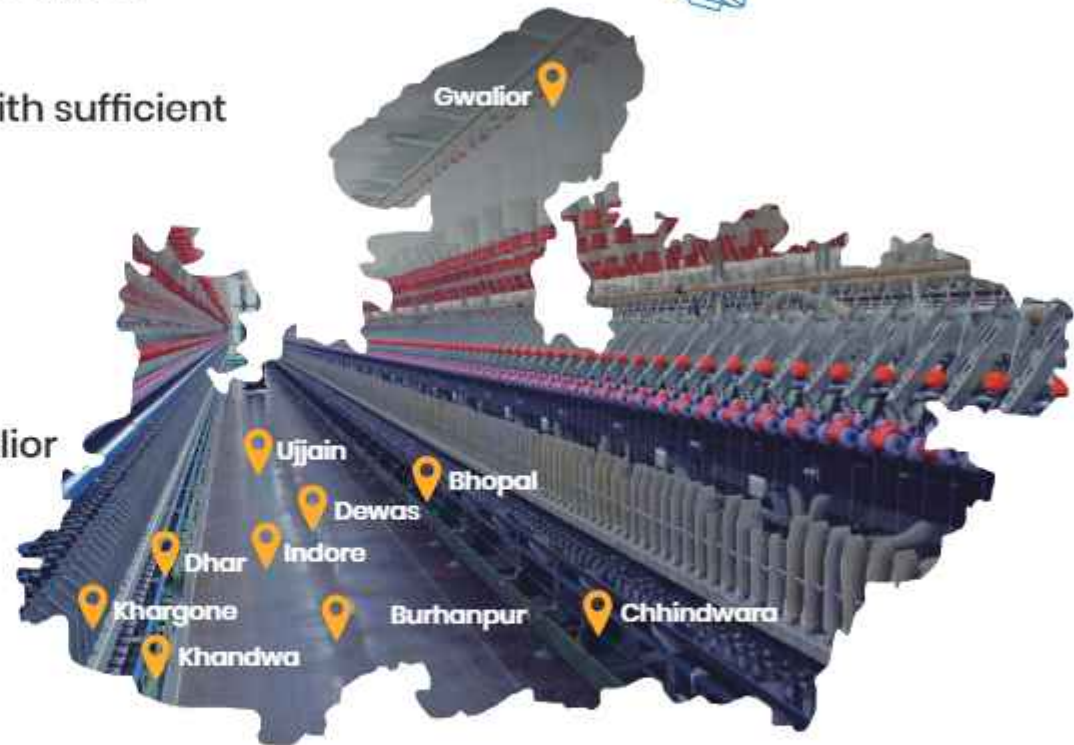


Apparel Training
& Design Centre



State received Highest Investment under PLI Scheme worth more than INR 3,500 Cr

- ▶ Ample Land, Water, Skilled Workforce and Surplus Quality Power
- ▶ Land available around prominent cities with sufficient Workforce Catchment
- ▶ Attractive Textile and Garment Policy is alluring units from all over India
- ▶ Ginning and Spinning clusters: Indore, Bhopal, Pithampur, Ujjain and Gwalior
- ▶ Weaving and Knitting clusters: Malwa-Nimar, Bhopal, Chhindwara and Jabalpur



270+

Pharma units in the State

1,00,000

People employed in the Pharma Sector



Pharmaceutical & Medical Devices

- ▶ Presence of large number of WHO-GMP, USFDA compliant
- ▶ State exported pharmaceuticals worth more than INR 10770 Cr in FY22
- ▶ Exports to 160+ countries including USA, UK, Russia, Netherlands, Germany and Brazil
- ▶ Presence of India's leading Pharma companies in the States
- ▶ 250+ Pharma Institutes with 18,000+ seats
- ▶ Major centers for the Pharmaceutical & Medical Devices: Indore, Ujjain, Dewas, Pithampur, Gwalior, Sagar, Jabalpur, Bhopal, Morena and Bhind.

- ▶ 20+ Medical Devices Units operational in the State
- ▶ 250+ units producing parts of Medical Devices including Display Screens, Thermal Controllers, Medical Beds etc.
- ▶ Presence of a thriving Engineering & Plastic Industry
- ▶ Medical Devices Park spread over 360 acres in Vikram Udyogpuri, Ujjain
- ▶ Common Infrastructure Facility: Prototyping, 3-D Printing Facilities, Testing and Calibration Facilities, Tool Rooms at subsidized costs



IT, ITeS & ESDM

- ▶ Vibrant Ecosystem with Work-Life Balance and Lesser Commute Time
- ▶ Low Cost of Business Operation in comparison to other cities
- ▶ Availability of Highly Skilled talent pool with the presence of IIT, IIM and 330+ Technical institutes & ITIs
- ▶ Presence of 150+ ESDM units
- ▶ Presence of 5 IT SEZs, 15 IT Parks and 2 EMC clusters
- ▶ Continuously improving Plug and Play Infrastructure
- ▶ Majority of the State falls in Low Seismic Zone

InfoBeans
CREATING VALUE

MPHASIS
an HP company

HLBS
HUMAN RESOURCE MANAGEMENT

appalto

paytm

TATA
TATA CONSULTANCY SERVICES

AEGIS+

impetus

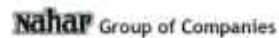
netlink

Infosys



Petrochemical and Natural Gas

- ▶ Rich Coal Bed Methane and Gas production in Vindhyan Basin (commercialising soon)
- ▶ Abundance of raw material for Ethanol production
- ▶ Growing downstream industries like Plastics
- ▶ Centrally located with access to huge Consumer Markets



Logistics and Warehousing

- ▶ State's Strategic Location ideal to rationalise the backhaul logistics cost
- ▶ Excellent Road and Rail connectivity
- ▶ Warehousing Capacity: 40 MMT and Cold Storage Capacity 13.2 LMT
- ▶ Upcoming Multi Modal Logistics Park (MMLP) at Indore and Bhopal
- ▶ Pioneer State in creation of Steel Silos
- ▶ Attractive Incentive Policy for Logistics & Warehousing units/Parks



Aerospace & Defence

- ▶ Strong presence of Defence PSUs, creating opportunities for Ancillary units
- ▶ Product Range: Artillery, Missile Propellants, Military Motor Vehicle, Grenade Casting, Armaments, Weapons, Ammunitions, etc.
- ▶ Home to India's first Private Sector Small Arms manufacturing unit
- ▶ Upcoming Rare Earth & Titanium Theme Park for material Testing, Processing and R&D
- ▶ Availability of 26 Airstrips for Industries, FTOs and promotion of Regional Connectivity



Renewable Energy

- ▶ Abundant natural resources for Green Energy production
- ▶ First State having Technology Agnostic RE Policy with focus to promote innovation in RE sector
- ▶ Sanchi being developed as First Solar City in Madhya Pradesh on "Net Zero Carbon" Concept
- ▶ A Manufacturing Zone for Power and Renewable Energy Equipments is being developed in Narmadapuram with support from Govt. of India

RE Source	Potential	Installed
Solar	62,000 MW	2746 MW
Wind	15,400 MW	2519 MW
Biomass	1,444 MW	131 MW
Small Hydro	800 MW	100 MW



Tourism

- ▶ India's Tiger State hosting 11 National Parks and 24 Wildlife Sanctuaries including 6 Tiger Reserves
- ▶ 2 Jyotirlingas (Ujjain and Omkareshwar)
- ▶ Development of Mahakal Lok at Ujjain has attracted highest footfall growing from 9.6 lakhs in year 2021 to 181.6 lakhs in 2022
- ▶ Kuno National Park, Sheopur is the new home of Cheetah
- ▶ 3 UNESCO World Heritage Sites (Sanchi, Khajuraho and Bhimbetka)
- ▶ Bhedaghat, Satpura National Park, Orchha and Mandu are included in the tentative list of UNESCO

Investment Opportunities

- ▶ PPP projects for Hotels, Cruise Tourism, Golf Course, Ropeways, Hop-On Hop-Off Bus, Air taxi operation
- ▶ Heritage & Pilgrimage Tourism
- ▶ Wildlife, Eco and Adventure Tourism
- ▶ Wellness Tourism
- ▶ Film Tourism
- ▶ MICE (Meetings, Incentives, Conference & Exhibition)



MSME Ecosystem

- ▶ Over 26 Lakh MSMEs employ 50 lakh people, out of which 21% are female
- ▶ MSMEs contribute ~ 30% (approx.) to the State GDP

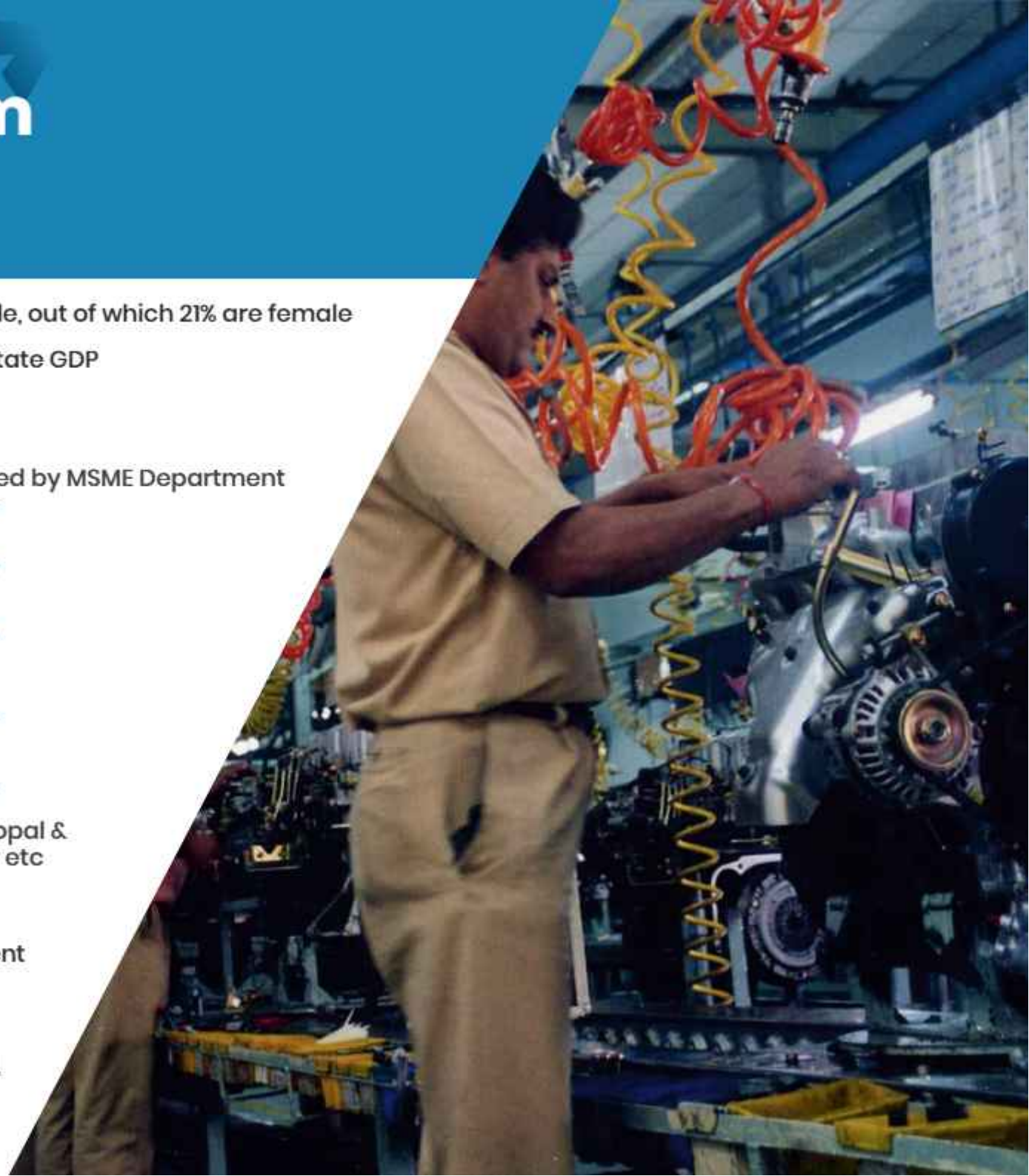
Focus on Cluster Development

208	Notified Industrial Areas developed by MSME Department
15	Developing Industrial Areas
11	Upcoming MSE-CDP Clusters
33	Approved MSME State Clusters
15	New Developing Industrial Areas

Presence of MSME Technology Centres in Bhopal & Indore, Apparel Incubation Centre in Gwalior etc

Incentives Policy

- ▶ Incentive Policy : 40% Industrial Development Subsidy
- ▶ Special Package for Powerloom, Textile & Apparel, Food processing, Pharmaceutical, Furniture, Toy and related value chain products



Start-Up Ecosystem

3700+

DPIIT Registered Start-ups

1700+

Women-Led Start-ups

Incubators:

65+ Incubators including:

- 3** Atal Incubation centres
- 2** STPI Incubators
- 1** DST, GoI-NIDHI TBI (IISER Bhopal & IIT Indore)
- 1** Apparel Incubation Centre – Ministry of Textile, Govt. of India
- 6** Smart City Incubator
(Indore, Bhopal, Jabalpur, Gwalior, Satna, Sagar)

Incubation Centres of Universities

MP Start-up Policy and Implementation
Scheme 2022 to incentivize Startups



M.P. Micro, Small & Medium Enterprises Policy

Key Highlights

Fiscal Incentives to MSMEs

- ▶ Industrial development Subsidy / Investment Promotion Assistance: upto 40% on Plant & Machinery and Building
- ▶ Additional Concessions for SC/ST/Women, Export Oriented Units
- ▶ Financial Assistance upto ₹ 5 Lakhs for Patents/IPR
- ▶ Concession to obtain Quality Certification, Energy audit expenses etc.

Fiscal Incentives for Infrastructure Development

- ▶ Infrastructure Development (Upto the Industrial Premises) Assistance upto Max ₹ 3 Cr
- ▶ Assistance for ETP setup upto Max ₹ 1 Cr
- ▶ Assistance for CETP setup (Min. 5 units) upto Max ₹ 1 Cr
- ▶ Financial Assistance upto ₹ 5 Cr for developing Industrial Areas in the Private Sector

Additional Fiscal Incentives to Medium Enterprises

- ▶ Food Processing / Employment x 1.5 multiple
- ▶ Geographical / Export x 1.2 multiple

**Special Packages for Pharma, Textile, Apparel,
Food Processing, Powerloom, Furniture, Toys, etc.**



Please scan this QR Code
to download policy
document

Industrial Promotion Policy

Key Highlights

- ▶ Investment Promotion Assistance: Capital Investment Subsidy upto 40% of investment in plant, machinery and building
- ▶ Infrastructure Development Assistance for creating Power, Water and Approach road
- ▶ Green Industrialization Assistance for establishing Waste Management Systems like ETP, STP, ZLD , etc
- ▶ Provision for Power Tariff Rebates and Electricity Duty Exemptions
- ▶ Reimbursement of Patent charges
- ▶ Incentives on offering employment to person with Disabilities
- ▶ Customized Package available for investments for all Mega Scale Industrial units

**Special Package for Ethanol, Defence, Logistics &
Warehousing, Electric Vehicles and ESDM**



Please scan this QR Code
to download policy
document

▶ **Garment** : Special Financial Assistance for Garment Units

- ▶ Provision of Interest subsidy of 5% for 7 years
- ▶ Employment Generation Assistance
- ▶ Skill development and training expenses reimbursement
- ▶ Concession in the Development Fee for taking Lease Land in the Industrial area
- ▶ Reimbursement of Stamp Duty and Registration Fee
- ▶ Maximum Incentives to the tune of 200% of investment in Plant and Machinery

▶ **Textile**

- ▶ Interest Subsidy for Textile Industry

▶ **Pharma**

- ▶ 2 Year Slack Period for Gross Supply Value (GSV) Multiple

▶ **Food Processing**

- ▶ 1.5 Times Incentives to Food Processing Sector i.e. upto 60% Capital Investment Subsidy
- ▶ Reimbursement of Mandi Fees
- ▶ Financial Assistance for creating Food Processing Infrastructures like Cold Chains and Warehouses



Contact Us

**Principal Secretary,
Department of Industrial Policy
and Investment Promotion**

D-204, Vallabh Bhawan-3,
Mantralaya, Bhopal, M.P.

Phone: +91-755-2708661

Mail: pscomnind@mp.gov.in

**Secretary,
Department of Micro, Small & Medium
Enterprises**

Vindhyachal Bhawan,
Bhopal, M.P.

Phone: +91-755 2677966, 2677 988

Mail: ic-mp@nic.in

**Managing Director,
MP Industrial Development
Corporation Ltd. (MPIDC)**

21, Arera Hills, Bhopal, M.P.

Phone: +91-755-2575618, 2571830

Mail: md@mpidc.co.in

FOR DETAILS, LOG ON TO:

invest.mp.gov.in