



Government of
Madhya Pradesh



MP INDUSTRIAL DEVELOPMENT
CORPORATION LTD.



ADVANTAGE MADHYA PRADESH



Index

| | |
|--|------------|
| 1. Demographic Profile | Page 1 |
| 2. Why Madhya Pradesh | Page 2 |
| 3. Network of Corridors | Page 3 |
| 4. Major Industrial Parks | Page 4 |
| 5. Ease of Doing Business | Page 5 |
| 6. Good Governance | Page 6 |
| 7. Industry Friendly Labour Dynamics | Page 6 |
| 8. Focus Sectors | Page 7-8 |
| 9. Agriculture, Dairy & Food Processing | Pages 9 |
| 10. Automobile & Auto Components | Page 10 |
| 11. Textile & Garments | Page 11 |
| 12. Pharmaceuticals, Medical Devices, and Healthcare | Page 12 |
| 13. IT, ITes, ESDM, GCC & AVGC | Page 13 |
| 14. Natural Gas & Petrochemicals | Page 14 |
| 15. Logistics & Warehousing | Page 15 |
| 16. Aerospace & Defence | Page 16 |
| 17. Renewable Energy | Page 17 |
| 18. Urban Development | Page 18 |
| 19. Tourism | Page 19 |
| 20. Mines & Minerals | Page 20 |
| 21. Skill Development | Page 21 |
| 22. MSME Ecosystem | Page 22 |
| 23. Start-Up | Page 23 |
| 24. Industrial Promotion Policy 2025 Highlights | Page 24 |
| 25. Sector Specific Policies | Page 25-26 |
| 26. Assistance for Infrastructure Development Highlights | Page 27 |
| 27. MSME Policy Highlights | Page 28 |
| 28. Export Policy Highlights | Page 29 |
| 29. Logistics Policy Highlights | Page 29 |
| 30. Start-up Policy Highlights | Page 30 |

Madhya Pradesh stands as a beacon of opportunities in the heart of India. It is a land where history and modernity coexist, offering a unique amalgamation of ancient heritage, awe - inspiring landscapes, and a vibrant cultural mosaic.

Known for its dynamic growth and innovation, Madhya Pradesh epitomizes the new industrial revolution, leading in sectors such as agriculture, textiles, pharmaceuticals, and renewable energy. The State is also making significant strides in IT, automotive, and tourism, showcasing its diverse industrial prowess. Madhya Pradesh is home to a highly skilled workforce, a microcosm of talent that drives its industries with precision and expertise. From traditional crafts to cutting-edge technology, the capital state covers the entire tapestry of industry, making it a crucial player in the global supply chain.

MADHYA



Invest in Madhya Pradesh and be a part of the remarkable journey
where **Infinite possibilities** await you!

PRADESH



Advantage Madhya Pradesh

Demographic Profile



Area:

308,252 Sq. km,
the second-largest
state by area.

Youth Population
(15–29 Age Group) :
Estimated to grow till
17 crores by 2047

5th Largest
Populous State,
with a huge Consumer
Market (~88 Mn)

Literacy Rate:
69.3%

Dynamic State Landscape



Largest area under Organic Cultivation
27% of India's Organic Production takes place in Madhya Pradesh



Largest Producer of
Copper, Manganese,
Molybdenum & Diamond



2nd Cleanest State
in India

Indore, the Cleanest
City in India

Why Madhya Pradesh?



Extensive Road Network

5 Lakh+ Kms of Road Network,
46 National Highways



Attractive Policy

Transparent Policy with
customized package



State of-the-art Infrastructure

340+ Industrial Parks (including
MSME, IT, EMC Parks), 7 Smart
Cities, 5 IT SEZs



World-class Healthcare

Presence of AIIMS, APOLLO,
Kokilaben Dhirubhai Ambani
Hospital



Strategic Connectivity

6 Airports, 20 Railway Junctions
6 Inland Container Depots,
1 Multi Modal Logistics Park



Most Livable State in India

Work-life balance, minimal
labor unrest, and a lower cost
of living compared to large
metro cities in India



Vast Industrial Land Bank

1 Lakh+ Acres



Top Tourist Destination

3 UNESCO World Heritage
Sites, 2 Jyotirlingas, 12 National
Parks



Power Surplus

31 GW installed Power Capacity
of which ~30% is clean energy
available at competitive power
tariff



Premier Institutes & Skilled Manpower

Presence of nationally reputed
institutes such as the Indian
Institute of Management (IIM),
Indian Institute of Technology
(IIT), Indian Institute of
Information Technology and
Management (IIITM), National
Institute of Technology (NIT),
National Institute of Design (NID),
and National Institute of Fashion
Technology (NIFT), along with
India's first Global Skills Park



Abundant Water Supply

1000+ million cubic meters for
Industrial needs at Doorsteps



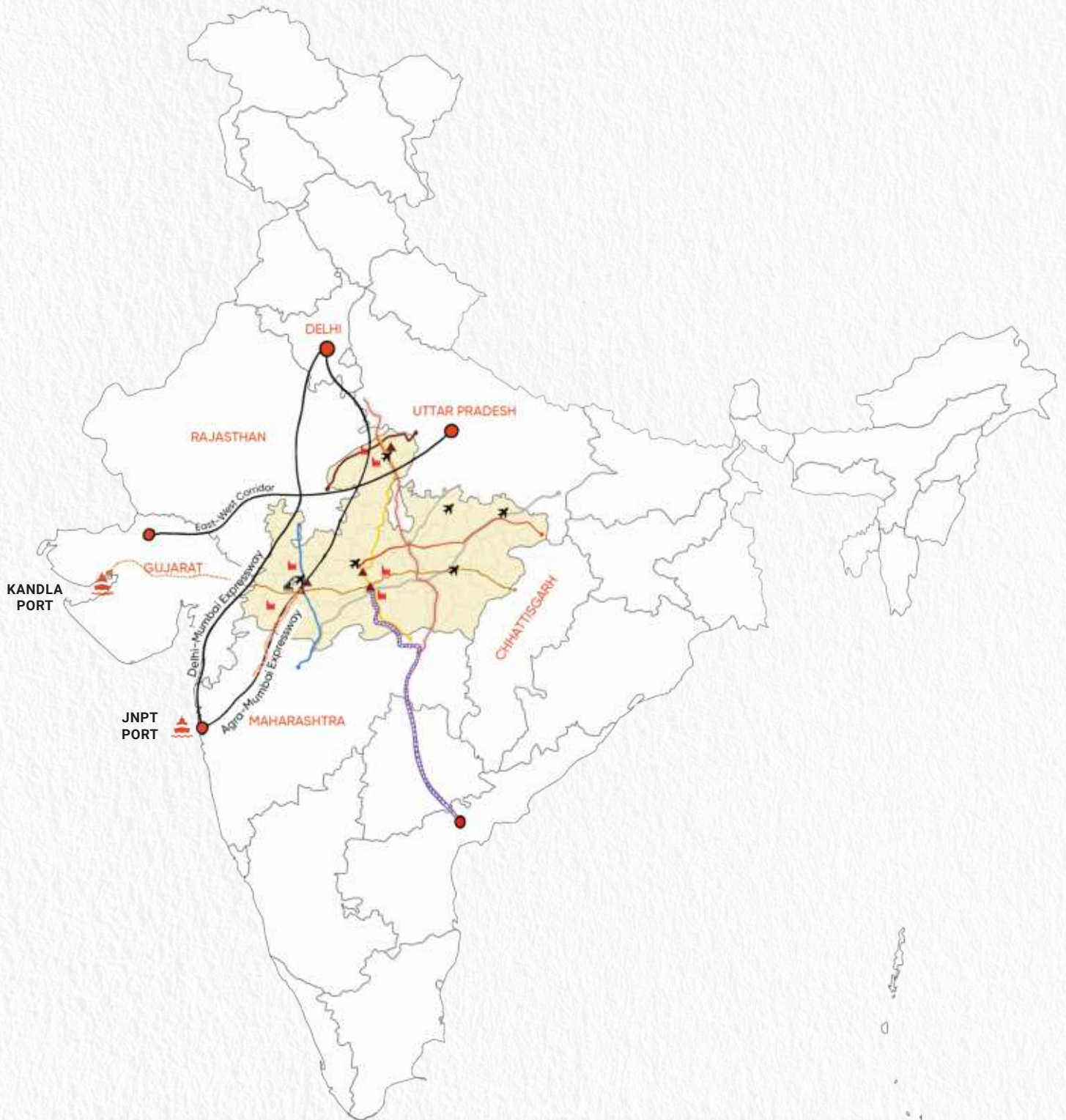
Ease of Doing Business

Top Achiever in BRAP (Business
Reforms Action Plan) 2022

Advantage **Madhya Pradesh**

Network of Corridors

National Industrial Corridors connect the State to key gateways and major consumer markets of India.



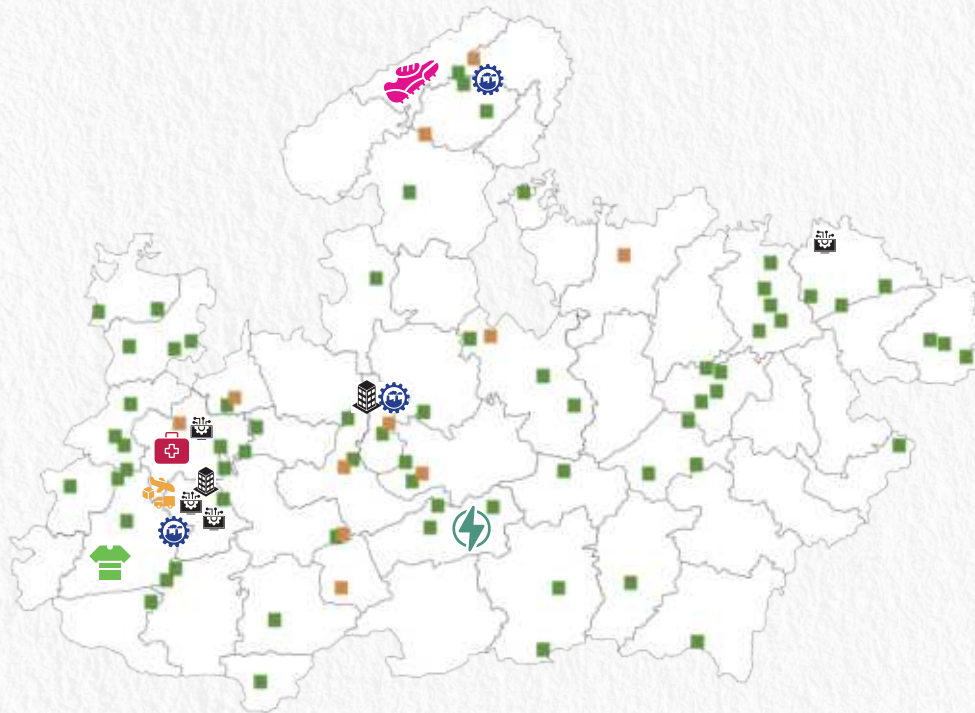
| | | |
|--------------------------|-------------------------------------|----------------------------------|
| Madhya Pragati path | Delhi-Nagpur IC | Airport |
| Vindhya Pragati path | Varanasi-Mumbai IC (Proposed) | Port |
| Atal Pragati path | Itarsi Vijayawada DFC | Inland Container Depot (ICD) |
| Bundelkhand Pragati path | Indore Manmad Proposed Railway Line | Multi Modal Logistic Park (MMLP) |
| Malwa Pragati path | | Government of India (GOI) Parks |
| Narmada Pragati path | | |

This is an Indicative Map, Not to Scale

Advantage **Madhya Pradesh**

Major Industrial Parks

Infrastructure parks to integrate global value chain



P.M. Mitra Park,
Dhar



**Leather,
Footwear &
Accessories Cluster
Development Park,**
Sitapur, Morena



**Prominent
Industry Clusters,**
Mandideep,
Malanpur, Pithampur



Medical Devices Park,
Vikram Udyogpuri,
Ujjain



**Manufacturing
Zone for Power &
Renewable Energy
Equipment,**
Narmadapuram



**Multi Modal
Logistics Park,**
Pithampur, Dhar

■ Proposed Industrial Park
■ Developed Industrial Park

This is an Indicative Map, Not to Scale



Upcoming IT Parks

Rewa – 1 | Indore – 2 | Ujjain – 1



Upcoming Plug and Play Parks

Mandideep – 1 | Indore – 1



Special Efforts to Attract Investment in 3 Zones

Ratlam
Investment Region

Pithampur
Investment Region

Indore - Pithampur
Economic Corridor



Largest land parcels

- Mohana, Gwalior – 210 Hectare
- Lalbagh, Dhar – 237 Hectare
- Khawasa, Jhabua – 205 Hectare
- Mohasa Babai Phase II, Narmadapuram – 839 Hectare
- Burkalkhapa, Jabalpur – 157 Hectare
- Semli-Kakad, Mandsaur – 80 Hectare

Advantage **Madhya Pradesh**

Ease of Doing Business

Invest Portal – One Stop Solution

54 services of 13 departments in the Single Window System.

GIS Based Allotment of Land in **29 days.**

Integrated with IILB (India Industrial Land Bank) and National Single Window System (NSWS).

Start Your Business In 30 Days

Timeline of **45 services** such as Consent to Establish, Operate, Electricity Connection etc. **reduced to 30 days or less.**

11.09 lakh+ applications disposed under reduced timeline; **20,000 applications** have been **deemed approved.**

3 Years exemption to industries

'Madhya Pradesh Udyogon Ki Sthapna Evam Parichalan Ka Saralakaran Adhinyam, 2023' published on 6th April 2023.

Exemption from **22 approvals** and their inspections of 7 departments for a period of three years.

296 Industrial areas notified under the Act.

Ease of Doing Business & Reducing Compliance Burden

2635 compliances related to businesses & citizens **reduced.**

6000+ cases resolved under Labour Case Management System.

Cyber Tehsil: **18.95+ lakh** revenue cases disposed through the Revenue Case Management System (RCMS).

Good Governance

Madhya Pradesh Jan Vishwas (Amendment of Provisions) Act, 2024 has decriminalized 64 provisions in 8 State Acts administered by 5 Departments.

Formation of the Public Service Management Department

A dedicated department to oversee the implementation of service delivery reforms.

Establishment of the State Agency for Public Services (2013)

Ensuring effective execution and monitoring of services under the Act.

Integration of Business Services

All essential services required for industries to commence operations have been notified under the Public Service Guarantee Act, 2010.

Industry Friendly Labour Dynamics



47% of the population in working age category



Safe work environment for women: Female workers in factories are allowed **24 X 7**



Negligible Man-days loss in Madhya Pradesh



Exempt from maintaining multiple registers and submission of multiple returns under Certain Labour Laws **(16 registers reduced to 1)**



First state to implement "Labour Case Management System.



**AGRICULTURE, DAIRY &
FOOD PROCESSING**

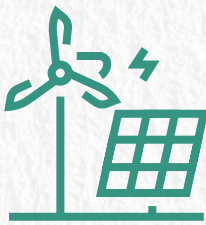


**AUTOMOBILE, AUTO
COMPONENTS & EV**



**TEXTILE &
GARMENTS**

Focus Sectors



**NEW & RENEWABLE
ENERGY**



TOURISM



URBAN DEVELOPMENT





**PHARMACEUTICALS,
MEDICAL DEVICES &
HEALTHCARE**



**LOGISTICS &
WAREHOUSING**



**AEROSPACE &
DEFENCE**



**MINES
& MINERALS**



**IT, ITes, ESDM,
GCC & AVGC**



**NATURAL GAS &
PETROCHEMICALS**



Agriculture, Dairy & Food Processing



Agriculture

contributes 32.3% to the state's total gross value add

Leading State of India in production of horticulture crop with productivity of 15.0 tons/hectare

Madhya Pradesh's fertile fields produce **Durum and Sharbati wheat** which excel in taste and nutrition, ideal for semolina, pasta, and bread

Madhya Pradesh's lush fields produce **Basmati and Chinnaur rice**, known for exquisite aroma and flavor is perfect for gourmet dishes.

3 Government and 6 Private Universities focused in Agriculture and allied research - CIAE, IISS, IISR and IIPR

1st

in organic farming and production of **Orange, Tomatoes, Corriander, Pulses, Soya bean and spices**

2nd

in the production of **Wheat, Maize, Onion, Green Peas, Guava, Green Chilli**

3rd

in production of **Milk, Aromatic & Medical Plants**



Automobile, Auto Components & EV



NATRAX (National Automotive Test Tracks)

Asia's Longest High-speed Test track with ~11.3 km in length

5 Auto Specific Labs : Vehicle Dynamics, Powertrain, Battery Test, Vehicle Instrumentation and CAD/CAE.

14 Test Tracks : High Speed, Dynamic Platform, Braking, Gradient, Fatigue, Gravel & Off Road, Handling, Comfort, Sustainability, Wet Skid Pad and Noise Track for 2W, 3W, Passenger and heavy commercial vehicles.

2nd Largest manufacturer of Bus and Tractors in India

3rd Largest manufacturer of Commercial Vehicles in India

Indore, Bhopal, Pithampur, Jabalpur and Dewas are India's leading auto clusters

30+
OEMs

200+
Auto Component
Manufacturers

1000+
Equipment
Manufacturers



BRIDGESTONE

VE COMMERCIAL VEHICLES

EICHER



MAHLE

motherson



LIUGONG

CASE
CONSTRUCTION



MAHINDRA
TWO WHEELERS

CAPRO



Textile & Garments



Country's Largest Integrated Textile Park in Dhar spread across 2100+ acres (PM Mitra Park)

Madhya Pradesh has ample raw material – **Cotton, Silk and Man-made Fibre**

State accounts for **47% of India's** and **24% of the world's Organic Cotton Production**

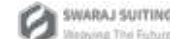
60+ large textile mills, 50+ technical textiles manufacturers & millions of spindles operating in MP

Textile and Garment Sector employs more than **50,000 people** in MP

Readymade garment clusters in Indore, Bhopal, Gwalior & Jabalpur

Plug and Play Infrastructure Parks in Indore, Bhopal and Jabalpur

Presence of **Textile and Design Institutes** – NIFT Bhopal, NID Bhopal, IITDM Jabalpur and India's first Global Skill Park in Bhopal





Pharmaceuticals, Medical Devices and Healthcare



30+ API/Bulk Drug Manufacturers

300+ Pharma Units in the State

Presence of large number of **WHO-GMP, USFDA Units compliant**

Pharmaceuticals account for **20%** of the state's export, largest share among all sectors

2700+ Private Hospitals & **12,100+** government healthcare facilities

57 Medical Device Manufacturers

Medical Devices Park spread over **360 acres** in Vikram Udyogpuri, Ujjain

Common Infrastructure Facility: Prototyping, 3-D Printing Facilities, Testing and Calibration Facilities, Tool Rooms at subsidized costs

9 AYUSH colleges and Hospitals
800 AYUSH Health & Wellness Centres
1770+ dispensaries



Advantage Madhya Pradesh

IT, ITes, ESDM, GCC & AVGC



India's 1st state to launch dedicated GCC Policy

5
IT SEZs

50+ large IT Companies
operating in the State
employing around 2 lakhs at present

\$500 Mn
IT, ITes exports
(2023-24)

15+
IT Parks

150K+
direct employment opportunities
created in the technology sector

300+ Colleges
offering technical education across
the state.

2000+
IT ITes Units

1200+ tech startups
with 2 unicorns
emerging from the state

50K+ Technical Graduates
annually, including UG, PG, and
Diploma holders

Policies catering to entire ecosystem:

IT, ITes, & ESDM Investment Promotion Policy 2023

GCC Policy 2025, AVGC-XR Policy 2025, Semiconductor Policy 2025

Drone Promotion & Usage Policy 2025



Natural Gas & Petrochemicals



State has India's 35% of established Coal Bed Methane (CBM) reserves

5th Largest Coal Reserves

7.7 trillion cubic feet (TCF) of prognosticated CBM resource (total 91.8 TCF) and 3.64 TCF established CBM reserves

100+ Downstream Industries

Reliance Industries Limited has been allotted 2 CBM blocks in **Sohagpur West and East** (in District Shahdol & Anuppur, MP) with an installed **capacity of 3.5 mmscmd**, transported via the 300-km Shahdol-Phulpur gas pipeline.

BPCL's upcoming petrochemical complex with annual capacity of **1.2 MMTPA** at Bina

2 Plastic Manufacturing Parks at Raisen and Gwalior

ONGC soon to commercialise production in Son Valley in Vindhyan Basin.



Advantage Madhya Pradesh

Logistics & Warehousing



State's Strategic Location ideal to rationalise the backhaul logistics cost

Excellent Road and Rail connectivity with 46 National Highways and 20 Railway Junctions

State's first Multi Modal Logistics Park is being developed near Pithampur, Indore on 255 acres and with an investment of ₹ 1110 Cr.

Second Multimodal Logistics Park proposed in Jabalpur

3 Industrial Nodes (under DNIC) :

Maswasi (Sagar),
Mohasa Babai (Narmadapuram),
Burkalkhapa (Seoni)

Indore-Manmad rail line connecting Delhi-Mumbai being developed

Surplus warehousing capacity of **~40MMT** and cold storage capacity of **13.2 MMT**

24+ Departments onboarded on PM Gati Shakti State Master Plan

Dedicated Policy for Logistics





Aerospace & Defence



Strategically located away from international borders

Home to India's 1st privately owned small arms manufacturing unit at Malanpur

Strong presence of **Defence Public Sector** Undertakings

Rare Earth & Titanium Theme Park with R&D facility

Collaboration with **International Defence OEMs**

India's 1st Drone School in Gwalior

Resource rich in essential minerals like Molybdenum, Copper, Aluminium, Manganese, Dolomite, Pyrophyllite, Uranium & Ochre

Strong market access and reachability to **50% of Indian market**

100+ units in Indore for engineering & ancillary components

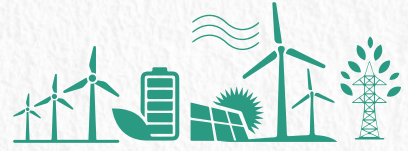
Steel roll mills for Armoured Steel

Access to **Advanced Testing Facilities**

Availability of **proof ranges for weapons** and ammunition manufacturing



New & Renewable Energy



Country's First Mega Solar Power Plant in Rewa, powers Delhi Metro (750 MW)

FY35 Expansion Targets

7,838 MW

Wind Power Generation

33,009 MW

Solar Power Generation

11,943 MW

RE Storage Capacity

India's Largest Floating solar project (278 MW)

Commissioned, proposed expansion upto 600 MW)

(Omkareshwar)

India's Largest Pumped Hydro Power Storage project (1920 MW) (Neemuch)

Sanchi, **Country's first Solar City**

State is coming up with **National level testing labs** for Wind and Solar

India's 1st

Power and Renewable Energy Equipment Manufacturing Zone - 1034 acres (Mohasa Babai-Narmadapuram)



Urban Development



Fast Growing Urban Centers

2nd
Cleanest State in India

7
Smart Cities

Massive Investment

Ongoing ₹72,000 Cr (\$8.37 Bn)
In-pipeline ₹88,000 Cr (\$10.23 Bn)

33.5%
GSDP Contribution

Madhya Pradesh has **4 cities** with population exceeding 1 million

Average budgeted expenditure for developing urban infrastructure - **₹15,780 Cr (\$1.94 Bn) per Year**

Best performing state - Flagship Policy reforms and laws

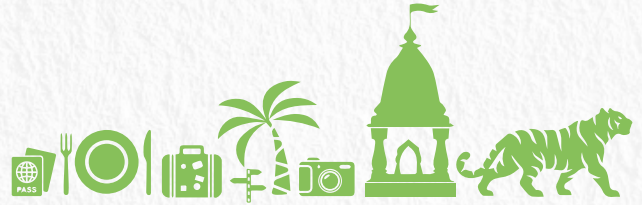
Streamlined Approvals, **Single-window Clearances** Under **EoDB**

Indore - Cleanest City of India

Bhopal - Cleanest Capital of India



Tourism



3 UNESCO World Heritage Sites, 2 Jyotirlingas and largest number of National Parks and Wildlife Sanctuaries

The **Wall Street Journal** has included Bandhavgarh, Khajuraho & Panna from Madhya Pradesh in its list of must visit destination for 2024

Known as the **Tiger State, Vulture State, Leopard State, Gharial State, and Cheetah State** due to the highest populations of these species

One of the most promising filming destinations, having facilitated over **350 major film & web series projects**

The State has received **numerous accolades**, including **National Tourism Award for Best Tourism State, Best Film-Friendly State, Best Adventure State, Best Innovative Tourism Destination, and Best Heritage City** by the Ministry of Tourism, Government of India

Development of **Mahakal Lok at Ujjain** has led to a significant increase in footfall, from 9.6 lakhs in year 2021 to **6.5 Crore** in 2024

Eleven destinations in Madhya Pradesh are included in **tentative list of UNESCO**, highlighting the state's rich cultural and historical assets.



Mines & Minerals



Only Diamond Producing state
90% of India's Diamond resource

Largest producer of copper ore and manganese ore.

2nd
largest producer of Rock Phosphate

2nd
largest producer of Limestone

4th
largest producer of Coal

Highest number of approved mines in India
721 Major and **6000+ Minor** Mineral Mines

Dedicated Mining College in Singrauli, MP

India's first **Rare Earth & Titanium**
Theme Park in Bhopal

India's first **GSI GeoScience Museum** in Gwalior



Skill Development



Ranked 1st in undergraduate (UG) enrolments and 3rd in PhD enrolments across India in terms of Gross Enrolment Ratio (GER)

Above-National Growth Rate in Higher Education

Achieved a **10% growth rate**, higher than the national average

Expanding Workforce

Expected to reach **5.6 million working-age population by 2026**, making it one of the largest in India

80+ Universities and 970+ ITIs in the State

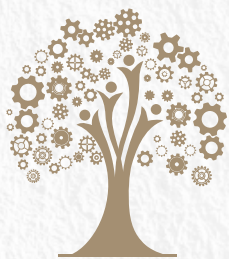
Home to **9 institutes** ranked in the **top 100 NIRF** across various educational streams

State Budget Allocation

USD 176.2 million committed to skill development initiatives

Google Cloud to establish Startup Hub and Centre of Excellence in MP





Advantage **Madhya Pradesh**

MSME Ecosystem



**MP Ranks 7th
in MSME registration**

**172 Operational Industrial
Areas developed by MSME
Department**

37

Approved MSME
State Clusters

20

New Developing
Industrial Areas

Over **16 Lakh+** MSMEs registered, out of
which **16% are women owned**

Employs - **19%** of working age population

Employment Generation of over **86+ lakh**

4000 Food Processing units

3000 Textile and Garmenting units

MSMEs contribute ~ **30%** (approx.) to the
State GDP

Presence of MSME **Technology Centres**
in Bhopal & Indore, Apparel Incubation
Centre in Gwalior



Start-Up Ecosystem



3

Software
Technology
Parks Incubators

5000+

DPIIT Registered Start-ups

47%

Women-Led Start-Ups

72

Incubators

4

Atal Incubation centres

2

Agribusiness Incubation Centre
(Jabalpur and Gwalior)

1

Apparel Incubation Centre Gwalior

6

Smart City Incubator (Indore, Bhopal,
Jabalpur, Gwalior, Satna, Sagar)

Madhya Pradesh Industrial Promotion Policy 2025 Highlights

Incentives for all Industries

1. BASIC INVESTMENT PROMOTION ASSISTANCE (BIPA)

Upto 40% assistance on Eligible Fixed Capital Investment (EFCI), maximum of ₹200 Cr

2. MULTIPLIERS TO BIPA

- Export Multiple: 1.0 to 1.3x BIPA for exports (25%-75%)
- Employment Multiple: 1.0 to 1.5x BIPA for 100-2,500 employees
- Geographical Multiple: 1.3x BIPA for priority blocks
- FDI Multiple: 1.0 to 1.2x BIPA (more than 26% FDI in equity)

3. GREEN INDUSTRIALIZATION ASSISTANCE

50% reimbursement:

- Up to ₹5 Cr for Waste Management Systems
- Up to ₹10 Cr for Zero Liquid Discharge (ZLD) systems

4. INFRASTRUCTURE DEVELOPMENT ASSISTANCE

50% reimbursement up to ₹5 Cr for infrastructure development on undeveloped land

5. IPR & ORGANIC CERTIFICATION ASSISTANCE

100% reimbursement: Up to ₹10 Lakh for IPR & up to ₹5 Lakh for organic certification

6. EXPORT FREIGHT SUBSIDY

50% for 5 years, ₹40 Lakh/unit/year (up to ₹2 Cr)

7. TRANSFER OF TECHNOLOGY

50% up to ₹1 Cr for tech transfer (For FDI Only)

8. INDUSTRIAL HOUSING

Live-near-work model with PPP, PMAY and up to 40% VGF

9. SPECIAL INCENTIVES FOR EMPLOYMENT OF PERSONS WITH DISABILITIES

10. SKILL DEVELOPMENT

Support under State schemes & other Government of India schemes

Sector Specific Policies

within Industrial Promotion Policy 2025*



Agri, Dairy & Food Processing

- Food Processing Multiple: 1.5x BIPA
- Power Tariff Reimbursement: ₹ 1/unit (5 years)
- Mandi Fee Reimbursement: 100% (5 years)
- Quality Certification: 50% up to ₹ 5 Lakh (5 years)



Textile

- Interest Subsidy: 5% on term loans (5 years), upto ₹ 50 Cr
- Apparel Training Institute: 25% support up to ₹ 50 Lakh



Garment, Footwear, Toys & Accessories

- Employment Assistance: ₹ 5,000/month per employee (5 years)
- Skill Development: ₹ 13,000/new employee (5 years, up to 4,000 employees)
- Interest Subsidy: 5% on term loans (7 years), max ₹ 50 Cr
- Concessions: 50% in Development Charge, 100% Stamp Duty & Registration
- Power Tariff Reimbursement: ₹ 1/unit (5 years)



Aerospace & Defence

- Development Charge Concession: 25%
- Quality Certification: 50% or ₹10 Lakh (whichever is lower)



Pharmaceuticals

- API/Bulk Drug Multiple: 1.3x BIPA
- R&D Assistance: 50% of in-house R&D in EFCI
- Quality Certification: 50% up to ₹ 1 Cr
- Slack Period: Upto 2 years from commercial production
- Testing Facility Support: 50% up to ₹ 1 Cr



Biotechnology

- R&D Assistance: 50% of in-house R&D in EFCI
- Testing Facility Support: 50% up to ₹ 1 Cr
- Biotechnology Park: State-supported establishment



Medical Devices

- Manufacturing Multiple: 1.3x BIPA
- R&D Assistance: 50% of in-house R&D in EFCI
- Testing Facility Support: 50% up to ₹ 1 Cr



Electric Vehicle (EV) Manufacturing

- EV Multiple: 1.3x BIPA
- Testing Facility Support: 50% in EFCI
- Quality Certification: 50% or ₹ 1 Lakh per model (up to ₹ 10 Lakh)
- Development Charge Concession: 25%



Renewable Energy Equipment Manufacturing

- Development Charge Concession: 50%
- Quality Certification: 50% or ₹ 1 Lakh (whichever is lower)



High Value-add Manufacturing

- High Value-add Multiple: 1.3x BIPA
- Skill Development: 13,000 per new employee (5 years, up to 4,000 employees)
- Quality Certification: 50% or ₹ 1 Lakh (whichever is lower)

*(These incentives are in addition to incentives available for all industries)

Assistance for Infrastructure Development

(Within Industrial Promotion Policy 2025)

Assistance for Private Industrial Park Developers

- **Stamp Duty & Registration Charges:** 100% reimbursement.
- **Fixed Capital Assistance:** 50% or ₹ 20 Lakh per Acre, whichever is less, on fixed infrastructure up to ₹ 40 Crores.
- **Green Industrialization Assistance:** 50% reimbursement up to ₹ 5 Cr for Waste Management Systems & ₹ 10 Cr for Zero Liquid Discharge (ZLD).

Plug-and-Play Facilities for Manufacturing/Services

Incentives for Infrastructure Developers:

- **Fixed Capital Assistance:** 25% or ₹ 25 Crores whichever is lower, on fixed infrastructure.
- **Green Industrialization Assistance:** 50% reimbursement up to ₹ 5 Cr for Waste Management Systems and ₹ 10 Cr for Zero Liquid Discharge (ZLD).
- **Subsidy on Common Facility Centers:** 25% assistance up to ₹ 25 Crores.

Incentives for Units in Plug-and-Play Facilities:

- **Eligible Units:** Receive all applicable incentives.
- **Rental Subsidy:** 50% rental subsidy, max ₹ 10 /sq ft/month for 5 years.

Support for Standalone units:

- **Standalone R&D Facilities:** 25% reimbursement up to ₹25 Crores for CSIR/DSIR-recognized R&D units.
- Support for Standalone Industrial Utilities (power, water, gas, waste management) via PPP or with VGF support.

MP MSME Development Policy 2025 Highlights

- Industrial Development Subsidy for MSMEs on investments in plant & machinery, building and other eligible items.
- Incentives for expansion, diversification, and technological upgradation of existing units at par to the new units.
- Additional incentives for women/SC/ST entrepreneurs.
- Additional financial assistance based on export, foreign direct investment, priority block and employment.
- Boosting industrial infrastructure through Clusters, Plug & Play, flatted industrial complexes, Common Facility Centres for MSMEs.
- Special assistance to private developers for Industrial Areas/Clusters, flatted industrial complex development.
- Continuing the Ease of Doing Business initiatives for MSMEs in the State.
- Support for quality certifications, including ISO, BIS, BEE, ISI, FPO, AGMARK and ZED.
- Support for Lean manufacturing.
- Assistance for patents and intellectual property rights (IPR).
- Incentives for green industrialization and energy audits.
- Financial assistance for listing and raising capital on the SME stock exchange.
- Freight assistance till gateway ports and international air cargo facilities for exporting MSME units.
- Special packages for Pharmaceuticals & Medical Devices, Food Processing, Apparel, Textile & Powerloom, Footwear, Furniture, and Toys.
- Special incentives for MSMEs for Circular Economy, Motor Vehicle Scrapping Centre, and R&D.
- Incentives/benefits under the MP Logistics Policy 2025 and MP Export Policy 2025 shall also be extended to MSMEs.

Madhya Pradesh Export Promotion Policy 2025 Highlights

- **First Time Exporters:** Upto ₹ 35 Lakhs in total
- **Export Infrastructure assistance:** One-time subsidy of 25% upto to ₹ 1 Crore
- **Export Turnover assistance:** up to ₹ 2 Crores per annum, for 5 years on (FOB)
- **Export Marketing assistance:** 75% up to ₹ 5 lakh per year for 5 years
- **Export Green Documentation assistance:** 50% upto ₹ 20 lakh/unit/year, for 5 years
- **Export Finance assistance:** Interest Subsidy upto 5%, upto ₹ 50 lakhs overall for 5 years
- **Export growth accelerator assistance:** upto to ₹ 30 lakhs per year, for 5 years on FOB for select sectors

Incentives for Developers of Dedicated Export Parks (DEP)

- Reimbursement of Stamp Duty and Registration Charges - 100%
- Fixed Capital Assistance for Infrastructure Development - 50% upto ₹ 40 Crore
- Assistance for Common Processing Facilities - 25% upto ₹ 25 Crore
- Green Industrialization Assistance - Upto ₹ 10 Crore

Madhya Pradesh Logistics Policy 2025 Highlights

Incentives

- Investment Assistance: for Logistics and Warehousing Infrastructure 30% on Fixed Capital Investment up to ₹ 75 crore
- External Infrastructure Development Assistance: reimbursement for developing last mile road, rail and drainage infrastructure of upto 50% of the total expense, upto ₹ 5 crore
- 100% reimbursement on Stamp Duty and Registration Fees
- Provision for land allotment as per Collector Guideline rates
- Assistance upto 40% on costs incurred for Converting Agricultural Produce Warehouses to Industrial Warehouses
- 50% reimbursement for Green Logistics certification

MP Startup Policy & Implementation Scheme 2025 Highlights

Financial Assistance to Startups

- Seed Fund Grant
- Startup Capital fund
- Assistance on loan/investment received
- Interest subvention & credit guarantee fee reimbursement under Mukhya Mantri Udyam Kranti Yojana
- Operational assistance to startups (Entrepreneur-in-residence, Lease, Patent, Prototype, Marketing, etc.)

Special Financial Assistance Package for Product based startups

- Employment generation assistance
- Employee skill development reimbursement
- Power tariff reimbursement
- Electricity duty exemption

Financial Assistance to Incubators

- New Incubator Establishment
- Upgradation of existing incubator
- Incubator led startup events
- Setting up Mega Incubator on PPP model

State level activities

- State Innovation challenge and hackathon
- Startup focus acceleration program
- Startup events
- State level Startup advisory council



INVEST MADHYA PRADESH

— INFINITE POSSIBILITIES —

Principal Secretary,
Department of Industrial Policy and Investment Promotion
D-204, Vallabh Bhawan-3, Mantralaya, Bhopal, M.P.

Phone: +91-755-2708661
Mail: pscomnind@mp.gov.in

Managing Director,
MP Industrial Development Corporation Ltd. (MPIDC)
21, Arera Hills, Bhopal, M.P.

Phone: +91-755-2575618, 2571830
Mail: md@mpidc.co.in



Scan here
for more
information
on policy

ORGANISED BY



NATIONAL PARTNER



Confederation of Indian Industry

KNOWLEDGE PARTNER



For Details, Log On To :
invest.mp.gov.in

