



Government of  
Madhya Pradesh



**INVEST**  
**MADHYA PRADESH**  
— INFINITE POSSIBILITIES —



MP INDUSTRIAL DEVELOPMENT  
CORPORATION LTD.



# POLICY COMPENDIUM

Government of  
Madhya Pradesh

# Madhya Pradesh's Policy Transformation

## Paving the Path to Sustainable Growth and Global Prominence

Madhya Pradesh has embarked on a transformative journey to position itself as a premier investment and industrial hub, aligned with India's national growth agenda and global trends. Through an inclusive, forward-thinking approach, the state has developed comprehensive policies. The State government has undertaken a multi-tiered intelligence-gathering process to ensure that its policies align with ground realities, industry expectations, and global trends.

Madhya Pradesh is committed to providing a **seamless investment climate, exemplary Ease of Doing Business and reduction of compliance burden through a robust, digital-first governance approach.** State has already put in place mechanisms to streamline approvals, with faceless interface and time-bound clearances. The state has institutionalized reform with the **Public Service Delivery Guarantee Act**, under which more than 750 services have already been notified—ensuring time-bound, faceless, and accountable service delivery. Reinforcing this commitment, the **Madhya Pradesh Udyogon Ki Sthapna Evam Parichalan Ka Saralikaran Adhiniyam, 2023** offers three-year exemptions from 22 approvals across 8 departments, with clearances enabled through the MP Invest Portal via automated workflows

Complementing this, the **MP Jan Vishwas (Amendment of Provisions) Act, 2024**—aligned with the Government of India's Jan Vishwas Act, 2023—decriminalizes 64 provisions across 8 state acts under 5 departments, reducing regulatory uncertainty and enhancing business confidence. These pioneering steps have placed Madhya Pradesh among the 'Top Achievers' in the BRAP 2022 and 2024 rankings. All these interventions, aids to reform-driven initiative of **Start Your Business in 30 Days** by ensuring time-bound approvals for businesses.

The state has also introduced a transparent and efficient **GIS-enabled Land Management and Allotment System**, enabling investors to check real-time industrial land availability, submit digital applications, and receive approvals within defined timelines. Approvals for utilities like water, electricity, and factories have been simplified, fire NOCs decentralized, and third-party inspections introduced. **Environmental compliance** has been eased, with White Category industries exempted from clearances. The **Centralized Inspection System (CIS)**, covering Labour, Boilers, Weights & Measures, and Pollution Control, ensures report availability within 48 hours.

The state has also advanced critical **land and labour reforms.** Change of Land Use (CLU) approvals are now fully digitized with a 15-day deemed approval mechanism. Building plan clearances are streamlined via ABPAS 2.0. Labour regulations have been updated to allow women to work night shifts (7 PM to 6 AM),

increase quarterly overtime limits from 75 to 125 hours, enable 24x7 operations for shops and commercial establishments, and raise the retrenchment threshold for prior approval from 100 to 300 workers. Additionally, a **faceless online incentive disbursement system** has been introduced, ensuring that the investors receive financial support in an efficient, transparent and timely manner. The **MP Invest Portal—integrated with the National Single Window System (NSWS)** and the **India Industrial Land Bank (IILB)**—will act as a one-stop, faceless platform managing the full investor lifecycle.

The State has formulated **18 new policies after thorough collaboration** with industry leaders and policy experts. Extensive consultation with the stakeholders has been the cornerstone of this approach. In-depth sector-specific benchmarking with leading states and global best practices, alongside lessons from evolving geopolitical dynamics, has helped craft progressive policies that address real industry challenges while unlocking new opportunities and fostering innovation. This **holistic approach** has allowed Madhya Pradesh to develop policies providing financial incentives at par with the best provided by any other State and complementing the regulatory reform efforts of the State.

The **Madhya Pradesh Industrial Promotion Policy 2025** aims to catalyze large-scale industries, new and emerging sectors, high-value-add manufacturing, foreign direct investments (FDI), and R&D-driven enterprises. Providing plug-and-play infrastructure for industries is another important cornerstone of the policy. **MP MSME Development Policy 2025 and Startup Policy 2025** support small businesses and startups with capital assistance, fostering innovation and integration into global supply chains. To further enhance global market access, the Export Promotion Policy 2025 is designed to establish Madhya Pradesh as a key exporter, targeting goods worth ₹1 lakh crore by 2029. The Logistics Policy 2025 bridges this gap by modernizing supply chain infrastructure to integrate seamlessly with national and international trade routes.

Each sectoral policy is designed to contribute to India's broader goals, such as Viksit Bharat 2047, Atmanirbhar Bharat (self-reliant India), Digital India, and Net Zero by 2070. By harnessing the power of digital governance and forward-looking policies, Madhya Pradesh is eliminating bottlenecks, reinforcing investor trust, and creating an agile, responsive, and business-friendly environment, positioning the state as an attractive destination for businesses.



# Table of Contents

|   |   |    |
|---|---|----|
| <b>Department of Industrial Policy and Investment Promotion</b> |   |    |
| 1.  | Madhya Pradesh Industrial Promotion Policy, 2025                                    | 07 |
| 2.  | Madhya Pradesh Logistics Policy, 2025   | 11 |
| 3.  | Madhya Pradesh Export Promotion Policy, 2025  | 12 |
| <b>Department of Micro, Small and Medium Enterprises</b>        |   |    |
| 4.  | Madhya Pradesh MSME Development Policy, 2025  | 13 |
| 5.  | Madhya Pradesh Startup Policy and Implementation Scheme, 2025                       | 16 |
| <b>Department of Science and Technology</b>                     |   |    |
| 6.  | Madhya Pradesh IT, ITeS and ESDM Investment Promotion Policy, 2023                  | 18 |
| 7.  | Madhya Pradesh Semiconductor Policy, 2025   | 21 |
| 8.  | Madhya Pradesh Global Capability Centers Policy, 2025                               | 22 |
| 9.  | Madhya Pradesh AVGC-XR Policy, 2025   | 23 |
| 10.   | Madhya Pradesh Drone Promotion and Usage Policy, 2025                               | 24 |
| <b>Department of New and Renewable Energy</b>                   |   |    |
| 11.   | Madhya Pradesh Renewable Energy Policy, 2025  | 25 |
| 12.   | Madhya Pradesh Pump Hydro Storage Policy, 2025                                      | 26 |
| <b>Department of Public Health and Family Welfare</b>           |   |    |
| 13.   | Madhya Pradesh State Health Sector Investment Promotion Policy, 2025                | 27 |
| <b>Department of Tourism</b>                                    |   |    |
| 14.   | Madhya Pradesh Tourism Policy, 2025   | 28 |
| 15.   | Madhya Pradesh Film Tourism Policy, 2025  | 29 |
| <b>Department of Urban Development and Housing</b>              |   |    |
| 16.   | Madhya Pradesh EV Policy, 2025  | 30 |
| 17.   | Madhya Pradesh Integrated Township Policy, 2025                                     | 31 |
| 18.   | Madhya Pradesh Real Estate Policy, 2019   | 32 |
| 19.   | Madhya Pradesh Housing Redevelopment Policy, 2022                                   | 33 |
| <b>Department of Aviation</b>                                   |   |    |
| 20.   | Madhya Pradesh Civil Aviation Policy, 2025  | 34 |
| <b>Department of Food and Civil Supplies</b>                    |   |    |
| 21.   | Madhya Pradesh City Gas Distribution Network Development and Expansion Policy, 2025 | 35 |





## Madhya Pradesh Industrial Promotion Policy, 2025



Positioning Madhya Pradesh as a top global investment hub



Target to achieve GSDP of approximately \$305 Bn (~₹27.2 lakh crore) by 2028-29

To increase industries contribution to the State's GDP from ₹2.9 lakh crore in FY 2023-24 to ₹5.4-5.9 lakh crore by 2028-29

### Additional Incentives

#### Assistance for Units Bringing in FDI

##### FDI Multiple

1.1 to 1.2x based on FDI equity

##### Transfer of Technology

50% upto ₹1 Crores for International Technology Transfer

#### Export Freight Subsidy

50% for transportation costs for 5 years, ₹40 Lakh per unit, per year, up to ₹2 Crores

#### Standalone R&D Facilities

25% reimbursement of fixed capital investment up to ₹25 Crores

*Customized package: Available for units investing ₹500 Crores or more*

### General Incentives for large-scale manufacturing units:

#### Basic Investment Promotion Assistance (BIPA)

Ranges between 40% to 10% for investments in Eligible Fixed Capital Investment (EFICI) for 7 years  
Maximum assistance up to ₹200 Crores

#### Enhanced incentives for key growth catalysts

##### Employment Multiple

1.0 to 1.5x BIPA for employing 100 to 2500 employees

##### Export Multiple

1.0 to 1.3x BIPA for export ranging from 25% to 75%

##### Geographical Multiple

1.3x BIPA for investments in priority blocks

##### Gross Supply Multiple

#### Infrastructure Development Assistance

50% reimbursement up to ₹5 Crores for infrastructure development

#### Green Industrialization Assistance

50% reimbursement up to ₹5 Crores for Waste Management Systems and ₹10 Crores for Zero Liquid Discharge (ZLD)

#### Assistance For Intellectual Property Rights (IPR) And Organic Certification

100% reimbursement up to ₹10 Lakh for IPR and ₹5 Lakh for obtaining organic certifications.

#### Establishment of

Industrial Housing and Standalone Industrial Utilities promoted through PPP mode

#### Skill development

Incentives available through convergence with various state and central government schemes

#### Special Incentives for Employment of Persons with Disabilities

# Key Sectoral Policies in IPP 2025



## Agri, Dairy, & Food Processing



**Food Processing Multiple**  
1.5x BIPA



**Power Tariff Reimbursement**  
₹1/unit for 5 years



**Mandi Fee Reimbursement**  
100% for 5 years



**Quality Certification Incentive**  
50% reimbursement up to ₹5 Lakh for 5 years

*Customized Package: Available for investment of ₹75 Crs or more*



## Textile



**Interest Subsidy**  
5% on term loans for 5 years, max ₹50 Crores



**Apparel Training Institute**  
25% support up to ₹50 Lakhs

*Customized Package: Available for investment of ₹500 Crs or more*



## Garment, Footwear, Toys, and Accessories



**Employment Generation Assistance**  
₹5,000/month per employee for 5 years



**Interest Subsidy**  
5% on term loans for 7 years max ₹50 Crores



**Concession in Development Charge**  
50% rebate



**Training & Skill Development**  
₹13,000/new employee for 5 years, for upto 4,000 employees



**Apparel Training Institute**  
25% support up to ₹50 Lakhs



**Power Tariff Reimbursement**  
₹1/unit for 5 years



**Reimbursement of Stamp Duty & Registration charges**  
100% reimbursement

*Customized Package: Available for investment of ₹75 Crs or more*



## Pharmaceuticals



**Multiple for API/Bulk Drugs**  
1.3x BIPA



**R&D Assistance**  
50% of in-house R&D investment to be considered in EFCI



**Testing Facility Support**  
50% assistance up to ₹1 Crore



**Quality Certification Incentive**  
50% reimbursement up to ₹1 Crore



**Slack Period**  
Upto 2 years from the date of commercial production for claiming incentives

*Customized Package: Available for investment of ₹250 Crs or more*



### Medical Devices



**Medical Device Manufacturing**  
Multiple: 1.3x BIPA



**R&D Assistance**  
50% of in-house R&D investment to be considered in EFCI



**Testing Facility Support**  
50% assistance up to ₹1 Crore

*Customized Package: Available for investment of ₹500 Crs or more*



### Bio Technology



**R&D Assistance**  
50% of in-house R&D investment to be considered in EFCI



**Testing Facility Support**  
50% assistance up to ₹1 Crore



**Biotechnology Park**  
State will support establishment of Biotech Parks

*Customized Package: Available for investment of ₹250 Crs or more*



### Aerospace & Defence



**Concession in Development Charge**  
25% rebate



**Quality Certification Incentive**  
50% or ₹10 Lakh, whichever is lower

*Customized Package: Available for investment of ₹500 Crs or more*



### Electric Vehicle (EV) Manufacturing



**EV Multiple**  
1.3x BIPA



**Testing Facility Support**  
50% of investment to be considered in EFCI



**Quality Certification Incentive**  
50% or ₹1 Lakh per model, whichever is lower, upto ₹10 Lakhs



**Concession in Development Charge**  
25% rebate

*Customized Package: Available for investment of ₹500 Crs or more*



### Renewable Energy Equipment Manufacturing



**Concession in Development Charge**  
50% rebate



**Quality Certification Incentive**  
50% or ₹1 Lakh, whichever is lower

*Customized Package: Available for investment of ₹250 Crs or more*



### High Value-add Manufacturing



**High Value-add multiple**  
1.3x of BIPA



**Quality Certification Incentive**  
50% or ₹1 Lakh, whichever is lower



**Training & Skill Development**  
₹13,000 per new employee for 5 years for up to 4,000 employees

*Customized Package: Available for investment of ₹75 Crs or more*



### Assistance for Private Industrial Park Developers

#### Stamp Duty & Registration Charges

100% reimbursement Stamp Duty & Registration Charges

#### Fixed Capital Assistance

50% or ₹20 Lakh per Acre, whichever is less, on fixed infrastructure up to ₹40 Crores

#### Green Industrialization Assistance

50% reimbursement upto ₹5 Cr for Waste Management Systems and ₹10 Cr for Zero Liquid Discharge (ZLD) systems

### Plug-and-Play Facilities for Manufacturing/Services

#### Incentives for Infrastructure Developers:

**Fixed Capital Assistance:** 25% or ₹25 Crores whichever is lower, on fixed infrastructure.

**Green Industrialization Assistance:** 50% reimbursement up to ₹5 Cr for Waste Management Systems and ₹10 Cr for Zero Liquid Discharge (ZLD) systems.

**Subsidy on Common Facility Centers:** 25% assistance up to ₹25 Crores.

#### Incentives for Units in Plug-and-Play Facilities:

**Eligible Units:** Receive all applicable incentives.

**Rental Subsidy:** 50% rental subsidy, max ₹10 per sq ft per month for 5 years.



Scan to  
Download



## Madhya Pradesh Logistics Policy, 2025



Driving Efficiency, Empowering growth



- To reduce logistics costs to match Global benchmarks by 2030
- To establish a data-driven decision support mechanism

### Incentives

#### **Investment Assistance**

for Logistics and Warehousing Infrastructure 30% on Fixed Capital Investment upto ₹75 crore

#### **External Infrastructure Development Assistance**

reimbursement for developing last mile road, rail and drainage infrastructure of upto 50% of the total expense, upto ₹5 crore

#### **Reimbursement Stamp Duty and Registration Fees**

100% upto ₹5 Crore

#### **Provision for land allotment**

as per Collector Guideline rates

#### **Assistance for the Conversion of Agricultural Produce**

Warehouses to Industrial Warehouses

40% of the total cost of conversion, upto ₹1 Crore

#### **Reimbursement for Green Logistics certification**

50% on certification fee, upto ₹20 lakh

#### **Development of Green Channel for EXIM Cargo**

#### **Fast-track Building Permission**



Scan to  
Download



## Madhya Pradesh Export Promotion Policy, 2025



Establishing Madhya Pradesh as a globally recognized export leader



To export goods worth ₹ 1 lakh Crore by 2029

Market “Made in Madhya Pradesh” globally

### Incentives

#### Export Multiple assistance

1.0 to 1.3 for exports ranging from 25% to 75%

#### Export Freight assistance

50% of the transportation costs, upto ₹40 Lakhs per unit, per year, for 5 years, subject to maximum of ₹2 Crore

#### Export Infrastructure assistance

One-time subsidy of 25% upto to ₹1 Crore

#### Export Turnover assistance

Incentive of 10% of annual incremental Free Onboard Value (FOB), up to ₹2 Crores per annum, for 5 years

#### Export Marketing assistance

75% reimbursement, up to ₹5 lakh per year for 5 years, limited to once per unit annually

#### Export Green Documentation assistance

50% assistance, ₹20 lakh per unit, per year, for 5 years

#### Export Finance assistance

Interest Subvention upto 5%, maximum ₹50 lakhs, for 5 years

#### Export growth accelerator assistance

Additional Incentive of 5% of annual incremental Free Onboard Value (FOB) in select sectors, upto to ₹30 lakhs per year, for 5 years

#### Assistance for first time exporters

Reimbursement of registration cum membership certificates and export insurance upto ₹25 Lakhs





## Madhya Pradesh MSME Development Policy, 2025



### Creating a thriving MSME ecosystem



To enable MSMEs become a vibrant and competitive force in the Indian economy, by providing them with the necessary assistance including capital and new age technology support. ensuring regional, economic and social balance.

#### Financial Incentives

##### Capex Assistance

Upto 40% reimbursement of the investments in P&M, building and eligible investment

##### Additional Incentives

8% extra for women and SC/ST entrepreneurs

##### Export Incentives

Upto 12% additional incentives for exporting units

##### Multiples-Based Incentives

Export, employment, geographical, and FDI-based multiples for units investing over ₹10 crore in plant and machinery

#### Quality & Certification Support

##### Certification Reimbursement

100% up to ₹20 lakh

##### Export Certification

50% reimbursement up to ₹50 lakh

##### ZED Certification

10% to 25% reimbursement for MSMEs

##### Lean Adoption

50% reimbursement up to ₹15 lakh

##### Patent Support

100% reimbursement up to ₹10 lakh per patent



### **Green & Energy Efficiency Support**

#### **Energy Audit**

50% reimbursement up to ₹50,000

#### **Energy-Efficient Equipment**

25% reimbursement up to ₹5 lakh

#### **Waste Management & Pollution Control**

50% reimbursement up to ₹2.5 crore

#### **Common Effluent Treatment Plant**

50% assistance up to ₹3 crore

### **Infrastructure & Cluster Development Support**

#### **Industrial Infrastructure**

50% reimbursement up to ₹3 crore, up to industrial premises

#### **Private Sector Industrial Area/Cluster Development**

50% of total expenditure up to ₹40 crore

#### **Flatted Industrial Complex**

50% of total expenditure up to ₹40 crore

### **Export & Global Competitiveness Support**

#### **Freight Assistance for exports**

50% reimbursement up to ₹40 lakh/year for 5 years

#### **Technology Transfer Assistance**

50% assistance up to ₹1 crore

#### **Testing Labs Assistance**

50% assistance up to ₹20 lakh

#### **SME Exchange Assistance**

50% assistance for listing an SME IPO up to ₹40 lakh

### **Service Sector & Research and Development Support**

#### **Circular Economy (Waste Disposal & Recycling)**

40% reimbursement up to ₹2 crore

#### **Motor Vehicle Scrapping Centres**

Capital subsidy up to ₹3 crore

#### **Logistics and Warehousing**

Incentives/Benefits as under the MP Logistics Policy 2025

#### **Research and Development**

Capital subsidy @25% up to ₹25 crore

## Sector-Specific Additional Incentives Support

### Pharmaceutical & Medical Devices Units

Incentive multiple of 1.3 for API/bulk drug & Medical Devices, interest subsidy @5% for 5 years

### Food Processing Units

Incentive multiple of 1.5, reimbursement on power tariff @₹1/unit, mandi fee reimbursement, PLI @1% on annual turnover up to ₹5 crore

### Apparel units

Employment generation subsidy @₹5,000/month, reimbursement on power tariff @₹1/unit, reimbursement on training expenses @₹13,000/month

### Textile units

Interest subsidy @2% to 7% for 5 years

### Powerloom sector

Reimbursement on power tariff up to ₹1.50/unit

### Footwear, Furniture & Toy

Employment generation subsidy @₹5,000/month, reimbursement on power tariff @₹1/unit, reimbursement on training expenses @₹10,000/month, interest subsidy@5% for 5 years.

*\*MSMEs are eligible for incentives under MP Logistics & Export Promotion Policies 2025*



Scan to  
Download



## Madhya Pradesh Startup Policy and Implementation Scheme, 2025



Unlocking the innovative world



To establish Madhya Pradesh as a leading startup hub at the global level, which encourages innovation, wealth creation and supporting ecosystem. This ecosystem will promote job creation, sustainability, investor confidence, ethical revenue models and equal opportunities

### Financial Incentives

#### Seed Fund Grant

Maximum up to ₹30 lakh/startup through empanelled incubators

#### Startup Capital Fund

₹100 crore corpus for investments in growth stage startups via alternative investment funds

#### Bank Loan Support

5% interest subvention & credit guarantee fee reimbursement for 5 years under Mukhya Mantri Udyam Kranti Yojana

#### Assistance on investment/loan received

up to 18% assistance on fund raised, up to Rs. 72 lakh in four rounds

### Operational Support

#### Product Development

100% reimbursement up to ₹15 lakh for R&D, branding & tech transfer

#### Entrepreneur-in-Residence

₹10,000/month/startup for 12 months to promote entrepreneurship among student and working professionals

#### Patent Assistance

Up to ₹5Lakh for domestic & ₹20 lakh for international patents

#### Lease rental assistance

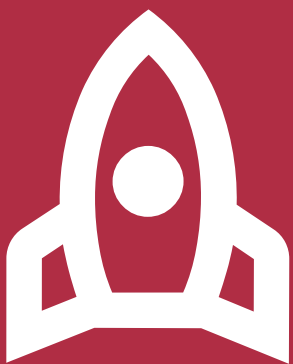
Reimbursement for rental, 50% maximum up to ₹10,000 per month for 3 years

#### Event Participation

75% reimbursement up to ₹50,000 for domestic & ₹1.5 lakh for international events

#### Online advertising assistance

100% reimbursement up to Rs. 3 Lakh for 1 year on prominent advertising platforms



Scan to  
Download

### Special Package for Product Startups

#### Training Support

₹13,000 per employee per year for 3 years (max 25 employees)

#### Employment Assistance

₹5,000 per employee per month for 3 years (max 25 employees)

#### Power Tariff Reimbursement

₹2 per unit for 3 years from commercial production

#### Electricity duty exemption

All eligible new units having new electricity connection shall be exempted from electricity duty for 3 years from the date of connection

### Financial Assistance for Incubators

#### Event Hosting

Up to ₹5 lakh per event, ₹20 lakh annual cap

#### New Incubator Setup

Up to ₹50 lakh capital assistance (100% for govt, 50% for private), excluding land and building

#### Land Allotment

Industrial rates for manufacturing incubators

#### Upgradation Support

Up to ₹10 lakh per year, max twice during policy period

### Special Programs

#### Grand Challenges

Up to ₹1 crore for solving socio-economic commercially viable problem

#### Hackathons

Up to ₹5 lakh for winners solving State-specific problems

#### Startup Acceleration

12-week extensive and focused mentoring program with maximum ₹15 Lakh support / program to incubators for running the program

### Ecosystem Development

#### Mega Incubator

To be established in PPP mode

#### Startup Advisory Council

Led by Chief Secretary with startup & industry leaders

#### Awards & Recognition

For outstanding startups & incubators

#### Startup Events

Regular startup-focused events by MP Startup Centre

#### Academic Partnerships

Technical support from top institutes



## Madhya Pradesh IT, ITeS and ESDM Investment Promotion Policy, 2023



Making MP central India's IT/ITeS and ESDM Hub



To create 2 Lakh Jobs in MP  
To attract ₹10,000 Crores investment  
To create 10 million sq.ft. state-of-the-art IT/ITeS/ESDM infrastructure

### **Incentives for IT/ITeS units**

#### **Capex Assistance**

25% on Gross Fixed Capital Investment (GFCI), maximum of ₹30 Crores and additional 2% for women entrepreneur(s), to be disbursed in 4 to 7 years

#### **Interest Assistance**

6% on the interest recovered or the actual rate, maximum of ₹ 5 Crores for 5 years

#### **Employment Generation Assistance**

Upto ₹5000/employee/month for minimum of 1000 employees and 200 employees in Rural BPOs

#### **Rental Assistance On per seat per month basis for 3 years**

##### **Coworking rental assistance**

₹3000, max ₹10 Crores for Category A districts\* and ₹1500, max ₹5 crores for Category B districts\*

##### **Rental Assistance**

₹1000, max. ₹3 crores for Category A districts\* and ₹5 crores, max. ₹1.5 crores for Category B districts\*

#### **Additional Assistance**

##### **Marketing Assistance**

50%, upto ₹2 Lakh for international and ₹1 Lakh for national events

##### **Discount on Cost of Quality Certification**

50%, upto ₹ 6 Lakhs

##### **Patents Assistance**

₹ 5 Lakhs per patent for domestic and ₹ 10.00 Lakhs per patent for international patent

##### **Stamp Duty and Registration Charges Reimbursement**

of 100% to eligible units

##### **For construction/development of the new building:**

upto ₹ 2,000/Sq.Ft. built-up area, for bare shell infrastructure  
upto ₹ 3,000/Sq.Ft. built-up area, for plug & play spaces



#### Incentives for ESDM Units

##### **CAPEX Assistance**

CAPEX Assistance of 40% on GFCI, and additional 2% for women entrepreneur(s), to be disbursed in 4 to 7 years

##### **Interest Assistance**

6% on the interest recovered or the actual rate (whichever is lower), maximum of ₹ 10 Crores for 5 years

#### Additional Assistance

##### **Marketing Assistance**

50%, Maximum ₹2 Lakh for international events and ₹ 1 Lakh for national events

##### **Assistance for Testing & Calibration & Certification**

upto ₹10 Lakhs

##### **Assistance for filing of Patents**

Maximum of ₹ 5 Lakhs per patent for domestic and ₹ 10 Lakhs for international patents

##### **Stamp Duty & Registration Charges**

100% Reimbursement

#### Incentives for IT/ITeS Developers

##### **CAPEX Assistance**

**For eligible developers:** Min- 2 Lakh Sq.Ft. built up

**For first 5 Parks in Category A districts:** 25% on GFCI (first 5 Parks in Category A districts\*) Max ceiling - ₹ 25 Cr (single location)

**For other developers (apart from first 5):** 15% capex on GFCI (in 5 years), Max ceiling - ₹ 10 Cr (single location)

#### Incentives for ESDM Developers

##### **CAPEX Assistance**

##### **Ready Built Factory Sheds without Common Facility -**

CAPEX - 15% of GFCI capped @ ₹ 1500 per Sq.Ft. max ceiling - ₹5 crore at a single location

##### **Ready Built Factory Sheds with Common Facility-**

CAPEX - 25% of GFCI capped @ ₹ 2,000 per Sq.Ft. max ceiling - ₹ 25 crore at a single location

\*Category A Districts: Bhopal, Indore, Jabalpur, Gwalior and Ujjain  
Category B Districts: Sagar, Chhindwara, Satna, Raisen, Vidisha, Dhar, Dewas and others as defined by CCIP

## Incentives for Data Center Units and Edge Data Centers

### CAPEX Assistance

25% on (GFCI), max ceiling ₹125 Cr (for each Data Center) for the first five anchor data centres other than edge data centres, with a Minimum GFCI of ₹500 Crores in M.P

Only for Edge Data Centers and Data centers coming after first 5 Data Centers: 15% on (GFCI), max ceiling ₹50 Cr for each DC

### Power Tariff Reimbursement:

₹ 2 per unit - first five Data Centers (with Min 5 MW capacity)

₹ 1 per unit - for others( for 5 years)

### Electricity Duty Exemption:

for upto 7 yers

### Transmission and Wheeling Charges:

Reimbursement for upto 5 years

### Provision for Dual Power Grid availability:

Provision for Renewable Energy under Open Access System

### Additional Assistances:

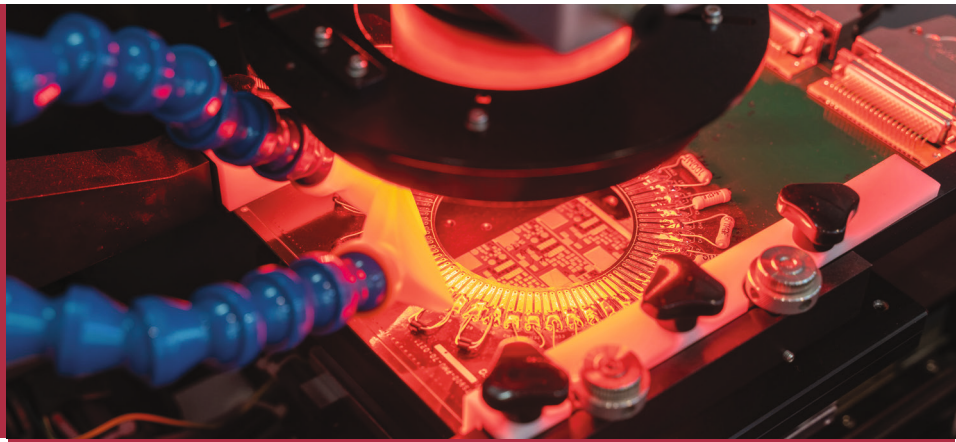
- **Assistance for filing of Patents-** Maximum of ₹ 5 Lakhs per patent for domestic and ₹ 10 Lakhs for international patents
- **Stamp Duty & Registration Charges-** 100% reimbursement
- **Quality Certification Assistance-** 50%, upto ₹10 Lakhs



Scan to  
Download



## Madhya Pradesh Semiconductor Policy 2025



### Strengthening India's Chip Ecosystem



To establish Madhya Pradesh as the hub of India's semiconductor revolution by creating a thriving ecosystem for manufacturing, design, and innovation. The policy envisions building world-class infrastructure, nurturing a future-ready workforce, and attracting global investments to position the state as a key player in the semiconductor value chain

#### Incentives

##### Capex Assistance:

25% of capex investment or 50% of incentives given by Government of India (GoI) to approved projects

40% up to ₹ 150 crore for projects not approved by GoI

Incentives up to 25% of project cost for semiconductor fabrication units not approved by GoI

**Rebate on Land:** Up to 75%

**Interest Subsidy:** 6% for 5 years (up to ₹ 10 crore)

**Power Tariff Subsidy:** ₹ 2 per unit for 10 years

**Seed Money & Development Cost:** 25% (up to ₹ 25 crore)

**Payroll Incentive:** 25% of CTC for the first 10 design companies

##### Lease Rental Reimbursement:

1,000 per seat for rental (up to ₹ 3 crore)

3,000 per seat for co-working (up to ₹10 crore)

**EPF Reimbursement:** Employer portion of EPF for 5 years

##### Customized Package:

Available for investments of ₹400 crore or more



Scan to  
Download



## Madhya Pradesh Global Capability Centers (GCC) Policy, 2025



India's first Dedicated GCC Policy



To position Madhya Pradesh as a leader in hosting Global Capability Centres (GCCs) by leveraging its skilled talent pool, fast improving infrastructure, and fostering research and innovation

### Incentives

#### Capex Assistance

40% up to ₹30 crore

#### Rental Assistance

25% on lease rentals for 3 years (up to ₹10 lakh per annum)

#### Employment Generation Assistance

50% payroll subsidy for the first 3 years (up to ₹12 lakh per employee)

#### IP Creation & Protection

50% assistance (up to ₹20 lakh)

#### Quality Certification

50% assistance (up to ₹6 lakh)

#### Skill Development

50% reimbursement for upskilling and reskilling

Internship support up to 10,000 per intern

#### R&D Support

50% assistance up to ₹1 crore

#### Other Incentives

Land Rebate up to 75%

Interest Assistance of 6% up to ₹ 5 crore

100% reimbursement of Stamp Duty & Registration Charges

50% marketing assistance up to ₹ 2 lakh

Assistance up to ₹ 25 lakh for hosting events in Madhya Pradesh



Scan to  
Download



## Madhya Pradesh AVGC-XR Policy, 2025



Unlocking the creative economy



To establish Madhya Pradesh as a leading hub for the AVGC sector in India, fostering innovation, creating high-quality content, and generating employment opportunities

### Incentives

#### Capex Assistance

25% of capex investment (up to ₹ 30 crore).

#### Rental Assistance

25% on lease rentals for 3 years (up to ₹10 lakh per annum)

#### Employment Generation Assistance

3,000 per employee per month (up to ₹ 10 lakh).

#### Marketing Support:

30% of participation costs (up to ₹ 10 lakh).

#### Production Incentives:

Incentives for animation movies, series, and international projects (₹ 50 lakh to ₹ 2 crore).

#### IP Creation & Protection

50% assistance (up to ₹20 lakh)

#### Quality Certification

30% assistance (up to ₹ 10 lakh).

#### Other Incentives

Reimbursement of Internet Bandwidth Charges up to 50,000 per annum for 3 year

Annual AVGC-XR conclave in Madhya Pradesh.



Scan to  
Download



## Madhya Pradesh Drone Promotion & Usage Policy 2025



Enabling India's Drone Revolution



To establish Madhya Pradesh as a leading hub for drone manufacturing and technology, fostering innovation, economic growth, and employment through the safe and efficient use of drones, while also incorporating advanced capabilities such as drone image processing and AI/ML technologies

### Incentives

#### Capex Assistance

40% of capex investment (up to ₹30 crore)

#### Rental Assistance

25% on lease rentals for 3 years (up to ₹5 lakh per annum)

#### Testing and Calibration

Support for DSDM and DeS units (up to ₹5 lakh per annum)

#### IP Creation & Protection

100% assistance (up to ₹10 lakh)

#### Quality Certification

100% assistance (up to ₹5 lakh per year)

#### R&D Support

50% assistance up to ₹50 lakh for advanced drone technology

#### Skill Development

Establishment of Drone Schools of Excellence

Assistance up to ₹25 lakh for drone-related courses.

### Other Incentives

#### Marketing Assistance

50% up to ₹2 lakh per year for 3 years

#### Internship Assistance

under MMSKY

#### Stamp Duty and Registration Charges

100% reimbursement



Scan to  
Download



## Madhya Pradesh Renewable Energy Policy, 2025



### Establishing Madhya Pradesh as a Renewable Energy Hub



To establish the State as a renewable energy hub by promoting RE equipment manufacturing, large-scale adoption, and innovative technologies in RE, hybrids, and energy storage for reliable and cost-effective power.

*Incentive for entities setting up offices in green zones or developing RE plant for captive consumption*

**Electricity Duty**  
exemption for 10 years

**Stamp duty reimbursement**  
50% for purchase of private land in green zone

**Rebate on government land**  
50% on circle rate to developers, in green zone

**Incentive for undertaking feasibility studies**  
100% to premium technical institutions, research institutions, private organizations to develop green cities, green zones, etc

*Incentives for RE Developers*

**Rebate on government land**  
50% on circle rate to developers

**Stamp duty reimbursement**  
50% for purchase of private land by developer

**Electricity Duty**  
exemption for 10 years

**Exemption from Energy Development Cess**  
for power supplied by renewable energy for 10 years

**Wheeling charges**  
50% for 5 years

*Incentives for RE Sourced Energy Storage Project*  
**Rebate on government land**  
upto 65% concession on Govt. Guidelines Rates

**Registration cum facilitation fees**  
exemption of 20%

**Stamp duty reimbursement**  
65% for purchase of private land by developer

**Exemption of Energy Development Cess**  
for Power supplied by RE for 10 years

**Wheeling Charges**  
50% waiver for 5 years and 100% for charging power

**Electricity Duty**  
Exemption for 10 years



Scan to  
Download



## Madhya Pradesh Scheme for Implementation of Pumped Hydro Storage Projects, 2025



Untapping the State's potential in Pumped Hydro Projects



Established Madhya Pradesh as a renewable energy hub and untap the State's potential in Pumped Hydro Projects

### Mode I

Allotment of PHS site on nomination basis to CPSUs, State PSUs and Authority set up by GoI or GoMP

### Mode II

Project developed for third parties or power exchange or captive consumption

### Mode III

Project developed for MPPMCL and other public organisations within and outside the state, wherein the project developer is chosen through a Tariff Based competitive bid

### Mode IV

Allotment of self-Identified off-stream Pumped Hydro Storage Projects

### Incentives

#### Exemption from Wheeling charges

For charging power to PSP within the state for pumped storage projects supplying to MPPMCL

50% waiver on wheeling of power through MPPTCL or MP Discoms network for 5 years

#### Exemption from Electricity Duty and Energy Development Cess

for 10 years

#### Exemption from payment

20% of registration cum facilitation fees

#### Registration cum facilitation fees

20% exemption

#### Stamp Duty reimbursement

65% on purchase of private land for the project

#### Rebate on Government land rate

65% for pumped storage projects under Mode III



Scan to Download



Madhya Pradesh  
Health Sector  
Investment  
Promotion Policy,  
2025



Enhancing access to healthcare facilities



- To plug the gap of tertiary facilities
- Promote setting up of multi-specialty hospitals
- To develop medical workforce
- To facilitate entry of private entities

Other Policy Incentives

**Simplification of Procedures:** simplified application process, with Investment Promotion Committee to evaluate applications

**Single Window Clearances** for setting up Medical Establishments

**Time Bound Clearances** Strict timelines for scrutiny and appraisal of applications at each stage of the process

**Online Clearance** through the portal to be managed by MPIDC



Scan to  
Download

Incentives

**Eligible Medical Establishments:** Multi-Specialty Hospitals, Super-Specialty Hospitals and Projects of certain size (i.e., Total Project Cost above ₹500 Crores in Cat A, above ₹75 Crores in Cat B & C districts. For medical colleges PPP mode is preferred

**Land Allotment:** For visionary projects that exceed Rs 500 Crores in Category A districts and Rs 75 Crores in Category B & C approval of Cabinet Committee for Investment Promotion (CCIP) will be required. Government may facilitate land allotment exclusively for CCIP approved projects

Capital Subsidy Without Land

| District | Multi-Specialty Hospital   | Super-Specialty Hospital  |
|----------|--|---|
| <b>B</b> | 30% of Total Project Cost; max. ₹15 Cr in 7 instalments for maximum up to 100 operational beds | 30% of Total Project Cost; max. ₹12 Cr in 7 instalments for maximum up to 50 operational beds |
| <b>C</b> | 40% of Total Project Cost; max. ₹20 Cr in 7 instalments for maximum up to 100 operational beds | 40% of Total Project Cost; max. ₹16 Cr in 7 instalments for maximum up to 50 operational beds |

**Cabinet Committee for Investment Promotion (CCIP)** approval for projects with Total Project Cost above ₹500 Crores in Category A districts and above ₹75 Crores in Category B & C districts. Government to permit land allotment only for CCIP approved projects



# Madhya Pradesh Tourism Policy, 2025



Developing sustainable and inclusive tourism for creating timeless experiences



To promote such balanced and sustainable tourism which enables socio-economic development, generate employment opportunities and establishes Madhya Pradesh as a destination that provides a complete tourism experience

## Fixed Reserve Price

### Rural Area

₹5 lakh/ Hect

### Urban Area

₹10 lakh/ Hect

### Heritage

₹1 lakh / Property



Scan to  
Download

## Incentives

### Capital Investment Subsidy

15% to 30% upto ₹90 Crore for Tourism Projects in any location in the state.

### Stamp Duty and Registration Fees

Reimbursement of 100%

### Lease

90 years, Annual lease rent of 1%

### Additional grant of

5% to promote electric cruise

### Special Incentives

for wildlife resorts

### Direct allotment of Govt Land

to Ultra Mega Projects (investment ₹100 Cr.+) by invitation

### Allotment of

Land Parcels, WSAs and Heritage Properties to Private Investors through e- tendering process

### Focus on

golf, water, adventure, and film tourism etc

### Golf Tourism

10% land can be used for commercial use

### Dedicated Investors Facilitation Cell

### Online and Time bound Application Process for claiming Financial Incentives

Only 10 permissions/NOCs required for setting up tourism projects

Permission to be given online

All permissions brought under Public Service Guarantee Act



## Madhya Pradesh Film Tourism Policy 2025



Creating Opportunities for Film Production and Investment



To make Madhya Pradesh a film tourism-friendly state and to generate maximum investment and employment opportunities through the film industry in the state

### Incentives

#### International Film Projects

Upto 10 Crore

#### Feature Film Projects

Upto 2 Cr. Or 25% COP (whichever is less)

#### Web series

Upto 1.5 Cr. Or 25% COP (whichever is less)

#### TV serials/Shows projects

upto 1 cr. Or 25% of COP (whichever is less)

#### Documentary Projects

Upto 40 lakh or 50% of COP (whichever is less)

#### Short Film Project

Upto 15 lakh for Nationally/Internationally recognition projects

#### Cinema Hall Construction

Upto 25% Or Maximum of 75 lakh

#### Film Related Infrastructure Development

30% or maximum of ₹90 Crore

#### Discount in room tariffs

upto 40% discount in State govt. owned hotels and Resorts

#### Additional Grants

for Supporting regional languages films, children's films, women's centric films, cultural famous figures, and local talent



Scan to  
Download



## Madhya Pradesh Electric Vehicle Policy, 2025



Driving Sustainable Mobility for a Cleaner Future



To promote sustainable electric mobility and bring about a material improvement in Madhya Pradesh air quality by bringing down emissions from transport sector

### Retrofitting Incentives

#### e-2W

₹ 5,000 / vehicle till 1st year

#### e-3W

₹10,000 / vehicle till 1st year

#### e-4W

₹ 25,000 / vehicle till 1st year



Scan to  
Download

30

### Incentives

#### Charging Infrastructure

##### Small Charging Stations

30% subsidy up to ₹1.5 lakh for the first 500 stations

##### Medium Charging Stations

30% subsidy up to ₹3 lakh for the first 300 stations

##### Large Charging Stations

30% subsidy up to ₹10 lakh for the first 200 stations

##### Battery Swapping Stations

30% subsidy up to ₹5 lakh for the first 300 stations

#### Road Tax & Registration Exemption

##### e-2W, e-3W, e-4W, e-LCV

100% exemption in the first year

##### e-buses, e-ambulances, e-trucks, e-tractors

100% exemption for two years

#### “MP EV Tarang” Portal

for all EV-related services & resources

#### Battery Reuse & Recycling

Support for EV battery recycling & urban mining businesses

Promotion of battery refurbishing for multi-life applications

#### Skill Development

##### EV courses

in 53 Polytechnic Colleges & 271 ITIs

##### Mandatory EV training sessions

in institutes for auto repair shops

##### Stipends for EV-related training

under Mukhya Mantri Seekho Kamao Yojna

##### One-Time Grant for Centre of Excellence

Up to ₹2 crore for EV innovation



## Madhya Pradesh Integrated Township Policy, 2025



### Creating Planned, Inclusive, and Sustainable Townships



The Integrated Township Policy focuses on real estate development, land pooling, housing, social infrastructure, and sustainable urban growth to create well-planned and livable communities

#### Incentives

##### **Government Land Contribution**

Government land granted to developer shall return 50% as reconstituted land

##### **Fast-Track Approvals**

Single-window clearance for statutory approvals within 60 days

##### **TDR Benefits**

Townships in TDR receiving zones can avail TDR as per prevailing norms

##### **No Land Ceiling**

No limit on land purchase for integrated township projects

##### **Development Plan Modifications**

Development Plan can be modified for the implementation of the policy

##### **Green FAR Incentive**

Extra FAR for wooded areas of at least 0.4 hectares beyond the minimum requirement

##### **Sustainable Energy Bonus**

Additional FAR for solar, wind, and green buildings

##### **Affordable Housing Boost**

Extra FAR for EWS/LIG housing exceeding the 15% minimum requirement.



Scan to  
Download



## Madhya Pradesh Real Estate Policy, 2019



### Transforming Real Estate: Simplified, Transparent, and Investment-Friendly



- Simplify and streamline approvals.
- Enhance ease of doing business.
- Improve transparency and accountability.
- Attract investment and create jobs.
- Promote planned and livable cities.

#### **Fast-Track Approvals**

Affordable housing projects approved within 15 days if documents are complete

#### **Instant Permissions**

Deemed approvals for planning & building permissions for specific structures



Scan to  
Download

#### **Incentives**

##### **One State One Registration**

A colonizer shall be required to register only once, with provision for renewal every five years

##### **Seamless integration of Registration and Mutation**

with the Revenue Department and Municipal Bodies for property tax collection

##### **Nazul NOC waiver**

with digitized and GIS based development plans/maps

##### **Online Composite Land Use Certificate**

(Form P-II) shall be provided. No further land use certification shall be required from T&CP department

##### **Shelter Tax Waiver**

No dual shelter tax for developments, including LIG/EWS housing contributions

##### **Affordable Housing Incentive**

Reduced or waived development, permission, and registration fees for private developers

##### **Density Bonus**

Increased FAR for additional EWS/LIG housing beyond mandatory limits

##### **Phased Completion Certificates**

Issued as per construction stages under Bhumi Vikas Niyam 2012

##### **Developer Consortiums**

Small developers encouraged to collaborate on large projects

##### **Lower Land Requirement**

Minimum land for residential schemes reduced below 2 hectares

##### **Eased Mortgaging**

Simplified colonizer registration with Urban Local Bodies

##### **Rationalized Re-Registration Fees**

Lower fees for ownership changes



## Madhya Pradesh Housing Redevelopment Policy, 2022



### Redeveloping Housing, Enhancing Living, and Optimizing Urban Land Use



- To redevelop and upgrade the existing housing stock
- To improve quality of living by providing structurally safe buildings, better surroundings & creating additional housing stock
- To utilize available land and infrastructure in optimal manner

#### Incentives

Housing schemes/projects can be undertaken by the Madhya Pradesh Housing and Infrastructure Development board (MPHIDB) ULBs or Private Developers etc.

The redevelopment of public and private housing schemes shall be done through Public-Private Partnership (PPP).

**Eligibility:** Housing schemes 30+ years old or declared dilapidated with a registered RWA qualify for redevelopment.

**Redevelopment Cess:** 7% cess on additional FAR utilized beyond permissible limits.

**Fee Exemptions:** One-time municipal & revenue charges waived for eligible projects.

**Developer Benefits:** Exemption from obligation to develop EWS/LIG units, payment of shelter fee, or bank guarantee requirement.

**Stamp Duty Reduction:** Reduced from 5% to 0.25% on compensatory component sales.

**FAR & Coverage:** 0.50 additional FAR, 40% ground coverage, and up to 7.5% built-up area for commercial use.



Scan to  
Download



## Madhya Pradesh Civil Aviation Policy, 2025



Creating a sustainable, investor-friendly aviation hub fueling growth, jobs, and tourism



To establish a regional Aviation hub with the intent to connect every district of Madhya Pradesh to rest of the State, India and the World

Development of 3 international airports, tehsil heliports, and an Aerotropolis in Indore-Dewas-Ujjain

Increasing Air Cargo limit to 20,000 MT with Krishi Udaan & Cargo Villages boosting trade

Aviation Skill Parks, FTOs, and six heli-hubs for seamless tourism connectivity



Scan to  
Download

### Financial Incentives

#### For New Route Development Viability Gap Funding (VGF)

Upto ₹10 lakh for new domestic routes, Upto ₹15 lakh for international routes.

#### VAT on ATF

1% for aircraft parked overnight at state airports

#### Maintenance, Repair, and Overhaul (MRO) Development Capital Subsidy

Upto 40% for developing MRO facilities, as per Madhya Pradesh Industrial Promotion Policy, 2025

#### Mega MRO Projects

Investment  $\geq$  ₹500 Cr eligible for customized incentives

#### Air Cargo Logistics

As per Madhya Pradesh Logistics Policy, 2025

#### Mega Cargo Projects

Investment  $\geq$  ₹75 Cr eligible for customized incentives

### Capacity Building & Skill Development

**Flight Training:** upto 40% capital subsidy for Flight Training Organisations (FTOs) with simulators as per Madhya Pradesh Industrial Promotion Policy, 2025

**Training Assistance:** 60% fee reimbursement (capped at ₹1 lakh) for non-simulator courses.

### Support for Aero Sports, Air Cargo Hubs & Sustainable Aviation Fuel (SAF) Initiatives



## Madhya Pradesh City Gas Network Development and Expansion Policy, 2025



Clean Energy, Clean Cities – Accessible and Affordable  
City Gas Distribution



To provide clean fuel in cities, reduce pollution levels, and establish the necessary approvals and land allocation process for the rapid implementation of the CGD infrastructure

### Key Incentives

#### Employment & Training

Collaboration with skill development institutes for CGD-related courses

#### Simplified Approvals

Single-Window Clearance

NOC from District Magistrate for standalone CNG, LNG, and decompression units

ROU permission for laying pipelines along roads

#### Government Land Allotment

Land allocation as per Madhya Pradesh Najul Bhumi Nivartan Nirदेश 2020

30-year lease agreements for CGD entities through the district collector

Urban land transfer under Madhyapadesh Nagarapalika (Achal Sampatti Antaran) Niyam 2023

#### CNG as a Preferred Fuel

Mandatory certified retrofitting for CNG vehicles

1% lifetime motor vehicle tax exemption for CNG vehicles

Promotion of CNG transport in eco-sensitive zones like forests and mining areas

#### Green Industry Classification

CGD projects may be upgraded from Green to White Category for regulatory ease



Scan to  
Download



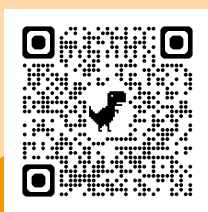
## CONTACT US

### **Principal Secretary,**

Department of Industrial Policy and Investment Promotion  
D-204, Vallabh Bhawan-3, Mantralaya,  
Bhopal, M.P.  
Phone: +91-755-2708661  
Mail: pscomnind@mp.gov.in

### **Managing Director,**

MP Industrial Development  
Corporation Ltd. (MPIDC)  
21, Arera Hills, Bhopal, M.P.  
Phone: +91-755-2575618, 2571830  
Mail: md@mpidc.co.in



*Scan for  
complete  
policy details*